



THE STONEHENGE

SCHOOL

Weekly Newsletter

Issue No. 32 | 12th June 2026

UPCOMING DATES

JUNE

Fri 12th to Sat 13th
DoE Bronze Expedition

Mon 15th - Fri 19th
Yr 8 Milestone 2

Tues 16th
Rising Mathematicians
Festival

Wed 17th
Yr 9 - Meducators
Andover College

Thurs 18th - Fri 26th
Yr 10 Milestone 2

Fri 19th
Yr 9 - Sparsholt Futures
Day

Wed 24th - Fri 26th
Yr 7 Osmington Bay Trip

SCHOOL UNIFORM UPDATE, KEY INFORMATION



Dear Parents and Carers,
We would like to share some important updates
regarding school uniform.



SUPPLIER UPDATE – EFFECTIVE IMMEDIATELY

KidzKlobber, one of the suppliers of The Stonehenge School uniform, has now been taken over by **Skoolkit**

This change is effective immediately. Parents and carers who would previously have purchased uniform through KidzKlobber should now contact Skoolkit for future purchases.



SUPPLIER LIST

Skoolkit – 20 Endless Street,
Salisbury, SP1 1DP. Tel: 01722 321200
www.skoolkit.co.uk/school-uniform/1498

Stitch-A-Logo – 12 Glenmore
Business Park, Colebrook Way,
Andover, SP10 3GQ. Tel: 01264 351515
www.stitch-a-logo.co.uk

PMG – www.pmg-schoolwear.co.uk



UNIFORM POLICY CHANGES FROM SEPTEMBER 2026

The school's uniform policy will be updated from September 2026. The key changes are outlined below:

Black V-Neck Jumper

The optional plain black V-neck jumper will be replaced by a black V-neck jumper embroidered with The Stonehenge School logo.

From September 2026, plain black V-neck jumpers will no longer form part of the school uniform and will not be permitted.

New Year 7 Students

Students joining Year 7 in September 2026 will be required to wear:

- The new logo blazer
- The new logo PE performance top

Current Students (Year 8 and Above in September 2026)

Students who will be in Years 8, 9, 10 or 11 in September 2026 may continue to wear uniform items displaying the previous school logo until they leave The Stonehenge School at the end of Year 11.

This transitional arrangement is intended to minimise additional costs for families while introducing the updated uniform for new students.



STAFF VACANCIES

Further details and an application form for all our vacancies can be found on our website via the following link - <https://www.stonehenge.wilts.sch.uk/vacancies/> Informal visits to the school are welcome; please contact the Head's PA, Debra Harker on 01980 676660 or e-mail harkerd@stonehenge.wilts.sch.uk You should provide detail outlining your skills applicable to the role and reasons for applying. This should be returned to Mrs D Harker, The Headteacher's PA, The Stonehenge School, Holders Road, Amesbury, Wiltshire, SP4 7PW

TEACHER OF ART (MATERNITY COVER)

Start Date: November 2026 or January 2027

Salary: MPS/UPS

Closing Date: Friday 3rd July, 9am

Interview: TBC

Teacher of Art (Maternity Cover)

HEAD OF COMPUTER SCIENCE

Start Date: September 2026

Salary: MPS/UPS plus TLR 2b £5, 348

Contract: Permanent Contract

Closing Date: Monday 22nd June, 9am

Head of Computer Science

You will be leading a high-performing team of dedicated professionals who are always striving to get the best for their students in a valued and popular curriculum area. You will be supported by a Senior team who have a clear consistent vision for the school and join a team of enthusiastic Middle Leaders who help to drive school improvements.

We are looking for colleagues with:

- a commitment to raising achievement
- the ability to engage and support students
- an enthusiasm and deep knowledge of the subject areas
- A commitment to help all young people and staff to achieve their best is expected of all staff.

Exam Invigilators

Scale B point 2, £12.65 per hour We require additional Exam Invigilators to work with us at The Stonehenge School. We are looking for enthusiastic and supportive individuals to work varied hours during the school day, mainly during GCSE exam periods but also covering internal and modular exams throughout the year. Must be available to work from 8.30 am to cover morning exams. Previous experience is not essential, as all training will be provided. Ideal candidates will be , reliable and flexible , have good communication skills , be confident and able to offer reassurance during exams.

Belong
in Wiltshire

Where military families can settle,
connect and feel **at ease.**



You'll find information and signposting here to help with life in Wiltshire by helping you find the place, services and people to help you feel at home.

Moving can be stressful, life can be hectic, but by connecting with others and support networks around, we can help you feel settled and you and your family can start living and thriving here in Wiltshire.

<https://www.wiltshire.gov.uk/belong-in-wiltshire>



Larkhill Primary PTA Presents a

SUMMER FETE & CAR BOOT



Saturday June 27th 2026
10am - 2pm

Larkhill Primary School, Wilson Road, SP4 8QB

ALL WELCOME!

**Face
Painting**

Raffle

Tombola

**Food
& Drink**

Games



Stalls

Car booters - £5 per car*
Stall holders - £10 + Raffle prize donation*
Registered Charities (Charity No. Required) - Free + Raffle prize donation*
Catering stall / Food Vendors - 15% of all sales + Raffle prize donation*

* Prebooking essential – Contact - admin@larkhill.wilts.sch.uk

Hawk Conservancy Trip

The children from Redworth were buzzing with excitement as they set off on their trip to the Hawk Conservancy. As they arrived, they were amazed to see magnificent birds of prey up close, from soaring hawks to powerful eagles. The guides shared fascinating facts about how these birds hunt, fly, and survive in the wild, capturing everyone's attention. During the flying displays, the children watched in awe as the birds swooped gracefully overhead, some gliding just above their heads. It was not only a fun day out but also a chance to learn about conservation and the importance of protecting these incredible creatures, leaving the children with unforgettable memories and a newfound appreciation for wildlife.



Funding Opportunity for Students and Apprentices

Vocational Support Grant | Wiltshire and Swindon Community Foundation

We would like to make families aware of a funding opportunity that may be of interest. Please note that the school is simply sharing this information and has no affiliation with the organisation offering the grant. We are not involved in the application process and cannot advise on eligibility or outcomes.

The Vocational Support Grant, provided by Wiltshire and Swindon Community Foundation, offers grants of up to £1,000 to support young people aged 14-24 who are studying vocational courses or apprenticeships.

Funding may be available to help with costs such as:

- Specialist equipment and resources
- IT equipment
- Course-related trips and activities
- Travel costs (in some circumstances)

Potential applicants must meet the eligibility criteria set by the charity, which may include residency requirements and household circumstances.

If you would like to find out more, including full eligibility details and application information, please visit the Wiltshire and Swindon Community Foundation website directly (link above).

We hope this information is helpful to families who may be eligible for additional support.

A vibrant purple and yellow poster for a 'GCSE Calculator Swap!' event. The title 'GCSE CALCULATOR SWAP!' is written in large, bold, white and yellow letters with a blue outline. Below the title, there are three bullet points: '★ Passed GCSE Maths?', '★ No longer need your scientific calculator?', and '★ Bring it in on Results Day and trade it for a bar of Dairy Milk!'. To the left of the text is a black Casio Classwiz scientific calculator. To the right is a purple Dairy Milk chocolate bar wrapper. At the bottom, a yellow starburst contains the text '1 CALCULATOR = 1 CHOCOLATE BAR'. Below that, a pink banner says '★ Year 11 only ★'. The poster is decorated with various math symbols and formulas: a right-angled triangle with sides a, b, and c; the equation $a^2 + b^2 = c^2$; a coordinate plane with axes x and y and a curve f(x); a square root symbol \sqrt{x} ; a bar chart with the equation $y = mx + c$; and the area formula $A = \pi r^2$. The background is purple with yellow and white confetti.

Super8s competition

The Year 7 mixed athletics team competed in a school games Super8s competition yesterday, where each athlete competed in one track and one field event. After a solid day of competing Stonehenge finished in 2nd place overall and could potentially qualify for the finals. Well done all.

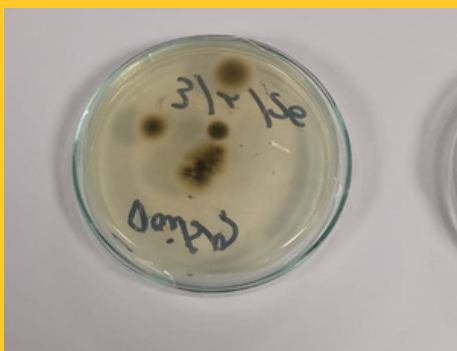


KS4 Stretch and Challenge Club

We have grown moulds and bacteria from the upper and lower surfaces of leaves taken from school. We used two types of agar plate one with malt and one without. These help different microorganisms to grow and we got a variety of types from Mildews, rust, red mould and some different bacteria colonies as seen below. More microorganisms were found on the top of the leaves which are more exposed to air.

Mrs Millar came and explained how the autoclave worked and the importance of destroying the microorganisms properly as some could be pathogens. It works like a pressure cooker and the science department is very grateful to have this new apparatus provided by the school.

Thanks to Douglas Bailey we have set up mini silage containers with freshly cut grass as seen below. He told us that his cows prefer straw as it is sweeter but are quite happy with silage in the winter.



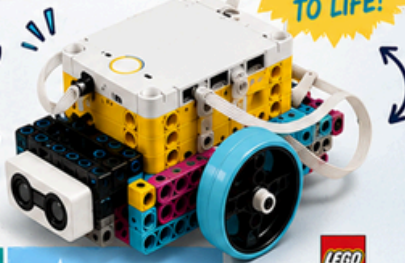
YEAR 7 ONLY!



★ YEAR 7 STUDENTS! ★ JOIN TEAM STEMHENGE!

BE PART OF OUR BRAND NEW
LEGO® SPIKE™ ROBOT TEAM!

BUILD IT.
CODE IT.
BRING IT TO LIFE!



WORK TOGETHER

Share ideas, help each other and achieve amazing things!



LEARN NEW SKILLS

Build, code and solve problems like a real engineer!



HAVE FUN

Take on exciting challenges and celebrate your wins!



BUILD

Create awesome robots and bring your ideas to life!



CODE

Write code and make your robot do amazing things!



DESIGN

Plan, test and improve your robot together!



COMPETE

Put your robot to the test in fun challenges!



BELONG

Be part of a team. Make friends. Make memories!



SCAN ME!

★ YOUR ADVENTURE STARTS HERE! ★
JOIN TEAM STEMHENGE!

BUILD TODAY. ★
CODE TOMORROW.
CHANGE THE FUTURE!

Successful applicants will be asked for a £30 annual contribution towards tournament entry.

WE WANT YOU!

YEAR 8 & 9 STUDENTS!

BE PART OF THE TEAM!



JOIN TEAM STEMHENGE!

COMPETE IN THE FIRST TECH CHALLENGE UK!

APPLY FOR A ROLE THAT SUITS YOU!



Drivetrain Engineer: Leads other team members in the building of the robot



Software Engineer: Develops and maintains the code needed to operate the robot



Manipulation Engineer: Takes challenge in the game and organises ways to create strategies



Project Manager: Coordinates all aspects of the team and leads group discussions



Financial Officer: Develops and maintains a budget, ensuring expenses are planned and funds are used wisely



Outreach Officer: Coordinates community outreach such as promoting the team in the local area



WORK TOGETHER
Share ideas and achieve amazing things!



LEARN NEW SKILLS
Build, code, design and so much more!



HAVE FUN
Take on exciting challenges and celebrate wins!



MAKE MEMORIES
Create friendships that last a lifetime!



MAKE AN IMPACT
Use STEM to solve problems and make a real difference in your community!



SCAN ME!

★ YOUR FUTURE STARTS HERE! ★
JOIN TEAM STEMHENGE!

BUILD TODAY. ★
CODE TOMORROW.
CHANGE THE FUTURE!

Successful applicants will be asked for a £30 annual contribution towards tournament entry.

Total - This Week



House	Attendance	Bonus	Homework	House Points	Library	SSC	Staff Points	Tutor Challenge	<u>Total</u>
Archer	300		169	3587	400	800	120		5376
Barrow	300		172	3853	300	700	210		5535
Sarum	400		167	3735	200	700	100		5302
Solstice	100		165	3414	100	800	120		4699



Total - This Term



House	Attendance	Bonus	Homework	House Points	Library	SSC	Staff Points	Tutor Challenge	<u>Total</u>
Archer	400		275	3955	800	800	280		6510
Barrow	700		272	4319	600	700	420		7011
Sarum	800		257	4131	400	700	180		6468
Solstice	400		274	3878	200	800	220		5772

SATURDAY 13TH JUNE

2-5PM

**OPEN
DAY**

**RIVERSIDE, ELSTON LANE
SHREWTON, SP3 4HL**

FREE PARKING AND ENTRY

PONIES

METAL DETECTING

**TRAILER
RIDES**

GAMES

BBQ



Will we see you there?

It's an open invite to our open day this Saturday, hopefully we will see you there!

If you have never been to one of our open days before, firstly why not! We run the open day as a fun family event, there are things for all ages, some free activities and lots to see and do. If you chose to do all the activities, free and paid it will cost approximately £10 per person but there is no requirement to do so.

Parking is free (but limited so if you are local, do consider walking) and there is no entry fee either. we will be serving food, drinks, ice cream.

This year Gul is attempting to raise money towards our New roof, so far we have raised over £17,000 and need to raise £20,000 to hit our goal



[Let us know you are coming](#)

ONLINE GAMING: ADVICE FOR PARENTS



Online gaming is one of the most popular activities for young people. Gaming can help children socialise, problem-solve and relax — but it is important to understand the risks too.

WHAT PARENTS SHOULD KNOW

Many games now include:



Live chat with strangers



In-game purchases



Competitive pressure



User-generated content



Links to social media

PRACTICAL STEPS



Turn off public chat for younger children



Check age ratings



Keep payment details secure



Watch or play together

QUESTIONS TO ASK




- 1 Who do you usually play with?
- 2 What happens if someone is rude in the game?
- 3 Do people ever ask for personal information?
- 4 How does the game make money?



REMEMBER

Gaming itself is not the problem — safe habits, balance and communication are key.



 BE AWARE

 STAY INVOLVED

 KEEP COMMUNICATING

 KEEP IT BALANCED



The
Stonehenge
School

**SMALL CONTRIBUTIONS
BIGGER POSSIBILITIES!**

JOIN OUR **SCHOOL** **100 CLUB!**

SUPPORT OUR SCHOOL & WIN CASH PRIZES!

100
MEMBERS
EACH MONTH



£1
PER MONTH

*That's less than
a cup of coffee!*



CASH PRIZES
3 PRIZES EVERY MONTH!



MONTHLY DRAW
LAST FRIDAY
OF EACH MONTH

Winners will be
contacted by the
school



SIGN UP TODAY!

Pay via Parent Pay and by completing form below

The Stonehenge School - 100 Club - Fill out form

Let's work together to support our school community!

**TOGETHER,
WE CAN
MAKE A
DIFFERENCE!**



GOOD LUCK - AND THANK YOU FOR YOUR SUPPORT!



DON'T MISS OUT • BOOK ONLINE TODAY

www.amesburyhistorycentre.org.uk



**EVENTS IN
JUNE & JULY**

YOUNG HISTORIANS WORKSHOP - Sun 5 Jul, 10am - 12 noon For 8 - 16 year olds.

BEWITCHED, BOTHERED & BEWILDERED - Thu 16 Jul, 7pm Talk by Dr Julia Phillips, about witchcraft and witches in Victorian Britain.

SECONDHAND UNIFORM SHOP


THE STONEHENGE
SCHOOL

 **UNIFORMMD**



FROM BLAZERS AND BASIC
MAIN UNIFORM ITEMS TO
PE KIT AND MORE

APP.UNIFORMD.CO.UK/
ITEMS/THE-
STONEHENGE-SCHOOL
Also find a link in the Parent
Portal on the school website

SECONDHAND UNIFORM SHOP - PROM!


THE STONEHENGE
SCHOOL

 **UNIFORMMD**



DID YOU KNOW THAT OUR
SITE ALSO HAS A STOCK
OF PROM DRESSES!

APP.UNIFORMD.CO.UK/
ITEMS/THE-
STONEHENGE-SCHOOL
Also find a link in the Parent
Portal on the school website

Prom night

Family and Community Learning

Discover Opportunities - Develop Skills - Achieve Ambitions



Online Course

Supporting My Teen with Anxiety

Tuesday 16 June 10am - 12pm



Book by
9 June

- Understand the challenges teens face and how anxiety affects them
- Learn practical ways to boost your teen's emotional wellbeing at home
- Discover strategies to help your teen manage anxiety in everyday life

For bookings scan the QR code or contact: 01225 770478

familyandcommunitylearning@wiltshire.gov.uk

<https://workwiltshire.co.uk/family-and-community-learning/>



Courses are no cost to learners who meet our eligibility criteria. Learners must be aged 19+ years, have a Wiltshire postcode, and meet residency requirements. Learners must also be able to tick **one** of the following criteria: individual income less than £25,750 a year; in receipt of benefits (other than child benefit); be a care leaver, foster carer or carer; be a military family or ex-armed forces personnel; have refugee or asylum seeker status; have a learning difficulty or disability; be looking to work, now or in the future.



Wiltshire Council

Family and Community Learning

Discover Opportunities - Develop Skills - Achieve Ambitions



Online Course

Supporting My Teen with Wellbeing

Tuesday 23 June 10am - 12pm



Book by
16 Jun

- Understand the changes in a teenage brain
- Learn techniques to promote wellbeing
- Explore positive psychology

For bookings scan the QR code or contact: 01225 770478

familyandcommunitylearning@wiltshire.gov.uk

<https://workwiltshire.co.uk/family-and-community-learning/>



Courses are no cost to learners who meet our eligibility criteria. Learners must be aged 19+ years, have a Wiltshire postcode, and meet residency requirements. Learners must also be able to tick **one** of the following criteria: individual income less than £25,750 a year; in receipt of benefits (other than child benefit); be a care leaver, foster carer or carer; be a military family or ex-armed forces personnel; have refugee or asylum seeker status; have a learning difficulty or disability; be looking to work, now or in the future.



Wiltshire Council



For families of teenagers aged 11+

Five To Thrive The Teenage Approach

Join other parent/carers where you can share ideas to develop the positive connection between you and your teenager.



Scan the code to express your interest or for more information or to book your space contact us on:
0800 970 4669
www.wiltshirefamilyhubs.org.uk

In partnership with...



June 2026 Timetable

All regular sessions delivered live online via zoom. 90 minutes long

£24 each or FREE with School Membership

Book online at facefamilyadvice.co.uk

Recordings available for 48 hours

Understanding Anger	1 June 10am
School Anxiety	1 June 7pm
Facing Defiance	2 June 10am
Supporting Healthy Screen Use	2 June 7pm
Anxiety Explained	8 June 10am
Cannabis & Ketamine Awareness	8 June 7pm
Introduction to OCD	9 June 10am
What is ACT?	9 June 7pm
Decreasing Depression	15 June 10am
Raising Self-Esteem	15 June 7pm
Understanding the Teenage Brain	16 June 10am
Supporting Healthy Sleep	16 June 7pm
Improving Family Communication	22 June 10am
Autism-Improving Communication	22 June 7pm
Supporting a Child with ADHD	23 June 10am
Understanding Addictive Behaviour	23 June 7pm
ADHD and Homework	25 June 7-8pm