



THE STONEHENGE

SCHOOL

Weekly Newsletter

Issue No. 18 | 6th February 2026

UPCOMING DATES FEBRUARY

Fri 6th
Yr 9 Trip to Bath University

Sat 7th
Sister Act Jr Rehearsal

Wed 11th
Sister Act Jr Performance

Thurs 12th
Sister Act Jr Performance

Thurs 12th - Sun 15th
Iceland Trip

Fri 13th
END OF TERM

Mon 16th - Fri 20th
HALF TERM

Mon 23rd
ALL STUDENTS RETURN
WEEK 1

Mon 23rd
Yr 7 Hawk Conservancy Trip



Ministry
of Defence



Message from the Headteacher ...

Funding Success: Inclusive Support for Service Pupils

We are pleased to share that The Stonehenge School has been successful in securing funding from the Armed Forces Covenant Fund Trust. The Trust supports projects that improve outcomes for members of the Armed Forces community, including children from service families, ensuring they are not disadvantaged by their parents' service.

This funding recognises the importance of early identification, targeted support, and inclusive practice, and will enable us to further strengthen the support we provide to our service pupils.

Our Focus: Inclusive Support for Service Pupils with SEND

The funding will support our project, Inclusive Support for Service Pupils, with a particular focus on service pupils with Special Educational Needs and Disabilities (SEND). The project aims to reduce barriers to learning and ensure pupils' needs are identified and addressed in a timely and effective way.

Our work will focus on four core areas:

Diagnostic Testing and Access Arrangements

We will improve early identification of need through in-house diagnostic testing and screening, ensuring appropriate access arrangements are put in place, particularly for pupils joining the school or entering Key Stage 4.

Academic Catch-Up and Classroom Support

Targeted English and Maths support will help service pupils close gaps in learning. This includes smaller teaching groups, structured literacy and numeracy support, and the use of assistive technology to promote independence and confidence.

Pastoral and Wellbeing Support

Enhanced pastoral provision will support pupils' emotional wellbeing, including access to counselling, therapeutic outdoor learning, and dedicated pastoral support tailored to the individual needs of service pupils.

Alternative and Off-Site Provision

Where mainstream education presents barriers, the project will provide additional support through our Alternative Curriculum Centre.

This funding will help ensure our service pupils feel supported, included, and able to thrive both academically and personally at Stonehenge School.

Celebrating Student Voice: Wiltshire Youth Council Elections

This week, The Stonehenge School was proud to take part in the Wiltshire Youth Council elections, giving our pupils a meaningful opportunity to have their voices heard and to engage in local democracy. We are delighted to share that we encouraged pupils across the school to vote, and had an excellent level of participation, showing how seriously our young people take their role in shaping the world around them. We are also incredibly proud that three of our pupils stood as candidates, representing The Stonehenge School as part of the wider Voice of Youth in Wiltshire. Standing for election takes confidence, resilience and a genuine desire to make a positive difference, and we commend all three pupils for stepping forward.

The Wiltshire Youth Council gives young people the chance to:

Share their views on issues that matter most to them

Influence decisions made by adults and local services

Develop confidence, leadership and communication skills

Learn how democracy works in real life

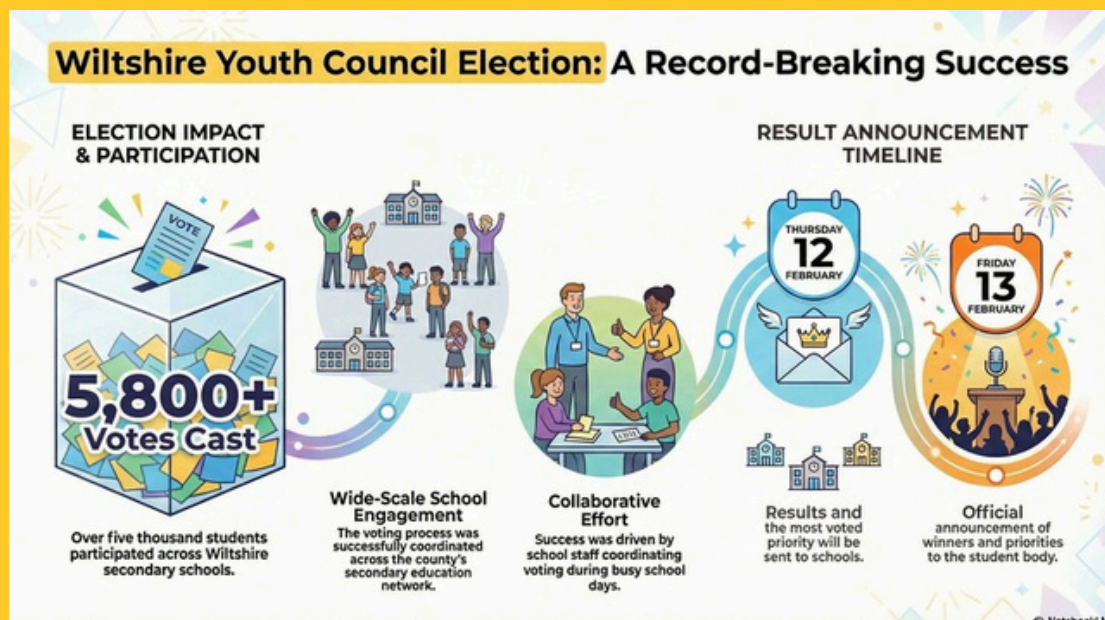
Make a positive contribution to their community

By taking part in the elections, our pupils were not just voting – they were learning how change happens, how opinions are represented, and how young people can shape decisions locally and beyond.

This aligns closely with our commitment to developing responsible, informed and active citizens, and helping pupils build the skills they need for life beyond school.

We look forward to celebrating the newly elected Youth Councillors and hearing more next week about the top priority issue identified by young people across Wiltshire.

Well done to everyone who voted, stood as a candidate, and supported this important event. Your voice matters – and this week, you used it.





THE STONEHENGE
SCHOOL

Presents

Sister Act Jr

Wednesday 11th & Thursday 12th
February 2026, 7pm

Tickets Available Via ParentPay

Adults: £7 Children £5

Music by
Alan Menken

Lyrics by
Glenn Slater

Book by
Cheri Steinkellner
& Bill Steinkellner

Additional Book Material
Douglas Carter Beane

Based on the Touchstone Pictures Motion Picture "Sister Act" written by Joseph Howard

Orchestrations by Doug Besterman Vocal and Incidental Music Arrangements by
Michael Kosarin Dance Music Arrangements by Mark Hummel

Produced on Broadway by Whoopi Goldberg & Stage Entertainment in association
with The Shubert Organization and Disney Theatrical Productions

Original Production Developed in Association with Peter Schneider & Michael
Reno and Produced by Stage Entertainment World Premiere Produced by
Pasadena Playhouse, Pasadena CA and Alliance Theatre, Atlanta GA

SheldonEpps, Artistic Director
Lyla White, Executive Director

SusanV.Booth, Artistic Director
Tom Pechar, Managing Director

Tom Ware, Producing Director

This amateur production is presented by arrangement with Music Theatre International All
authorised performance materials are also supplied by MTI www.mtishows.co.uk

How Flashcards Support GCSE Success

Flashcards are one of the **most effective revision strategies** because they strengthen memory through active recall.



Why they work

- They force students to retrieve information, not just reread it
- Struggling to remember is part of learning - it's normal and positive
- Regular, spaced practice improves long-term retention

How you can help at home

- Ask your child to explain an answer out loud before checking it
- Test them briefly and often - short sessions are better than long ones
- Encourage revisiting cards over time, not just once
- Praise effort and consistency, not just correct answers



What to avoid

- Don't let flashcards become copying notes or long explanations
- Don't leave them until just before exams
- Don't focus only on subjects they enjoy - weaker areas matter most



Confidence grows when knowledge becomes automatic.

• ◆ •

Stay in the loop and follow us on social media.

Did you know the easiest way to keep up to date with what's happening at school is through our social media pages? 📱 We regularly share news, reminders, celebrations, trips, events and snapshots of school life, so you don't miss a thing. Please take a moment to like and follow us – it's a great way to see what our students are getting up to and to stay informed between newsletters. Links below. Thank you for your continued support! 💎



Being Good Global Citizens - Our Responsibilities Beyond the School Gates

We have recently received concerns from local residents about the behaviour of a small number of pupils in the community after school. This has included littering, inappropriate gathering in residential areas, and damage to property.

I want to be very clear: this behaviour is not acceptable and does not reflect the values of The Stonehenge School. When pupils are in uniform, they represent not just themselves, but our entire school community. Being a good global citizen means showing respect for others, caring for our environment, and understanding the impact our actions have on people around us – particularly those who may be more vulnerable.

We are addressing this directly with pupils in school and will continue to work with families and the wider community to reinforce expectations. I would also ask for your support in talking to your child about how they behave on their journey to and from school and when spending time in the local area. Our community matters. How our pupils behave beyond the school gates is just as important as how they behave within them.

Thank you, as always, for your support.



Support for Carers of Neurodiversity

SEN Sanctuary

24TH FEBRUARY, 2026
WILTON PLACE CARE HOME
SP2 OFX

A PLACE TO COME FOR HELP, ADVICE,
SUPPORT AND A LISTENING EAR. TO TALK TO
OTHER PARENTS GOING THROUGH THE
SAME THINGS AS YOU.
NO JUDGEMENT, JUST SUPPORT FROM ONE
PARENT TO ANOTHER.

**Every other Tuesdays
10a.m-12P.M**

Your paragraph text

FOOTBALL RESULTS

Year 7 District League Match Report

In a thrilling district league encounter, the Year 7 boys put in a stunning performance to defeat Sarum Academy 12-1 and go top of the league. From the first whistle the team showed great intensity and skill, racing into an 8-1 lead by half-time.

The second half continued in much the same fashion, with the squad demonstrating excellent teamwork, relentless pressure and a clinical edge in front of goal. Every player contributed to an impressive attacking display, but it was Caiden who stood out on the day and was deservedly named Man of the Match for his influential play and key contributions across the pitch.

This dominant win not only showcased the boys' attacking prowess but also sees them sit proudly at the summit of the district league table heading into the next fixtures.

Year 7/8 Mixed Team vs Appleford School

The Year 7/8 mixed team put in a brave effort against Appleford School but were beaten in a challenging match. Despite the result, the performance was impressive, especially as the Year 7 players were competing a year up, playing 11-a-side on a much larger pitch. Their effort, resilience, and teamwork were clear throughout the match.

Year 8B vs Sarum Academy

Year 8B earned a well-deserved win against Sarum Academy on Monday with a strong all-round performance. Good teamwork and solid defending helped secure the victory in an enjoyable match.

U12 Girls County Cup Match Report

The U12 girls' football team produced an excellent performance on Wednesday, beating Ridgeway School 5-2 in the County Cup. The girls dominated throughout, contesting every ball and matching the opposition with determination and skill despite a very muddy, slippery pitch. Millie M, Imogen B and Eliana were all on the scoresheet, each netting superb goals. The team now progress to the next round, where they will face Trafalgar at home.



Our students competing at the County Schools Badminton Competition



Congratulations to our Year 11 student Lily Safe on her invite to the FA Women's England Talent Pathway 'Future Lionesses' Talent Confirmation Event. An amazing achievement which we are all very proud of. Good luck Lily I am sure we have a future Lioness in the making.



Year 11 basketball team

The Year 11 basketball team claimed a deserved victory thanks to a confident overall display. Strong cooperation and disciplined defence played a key role in sealing the win in an entertaining game.



Total - This Week



House	Attendance	Bonus	Homework	House Points	Library	SSC	Staff Points	Tutor Challenge	Total
Archer	300	18045	358	3904	400	200	150	100	23457
Barrow	300	15165	386	3912	300	300	150	60	20573
Sarum	400	10095	353	4002	100	600	160	90	15800
Solstice	300	13325	349	3745	200	300	90	30	18339

Total - This Year



House	Attendance	Bonus	Homework	House Points	Library	SSC	Staff Points	Tutor Challenge	Total
Archer	2666	23507	6261	133258	2600	3600	1638	1542	175072
Barrow	4363	20580	6442	130044	2469	3600	2657	1501	171656
Sarum	5074	17680	6056	129416	1590	3800	2012	1209	166837
Solstice	2939	17460	5817	119198	1472	4000	1735	1772	154393

STAFF VACANCIES

Further details and an application form for all our vacancies can be found on our website via the following link - <https://www.stonehenge.wilts.sch.uk/vacancies/> Informal visits to the school are welcome; please contact the Head's PA, Debra Harker on 01980 676660 or e-mail harkerd@stonehenge.wilts.sch.uk You should provide detail outlining your skills applicable to the role and reasons for applying. This should be returned to Mrs D Harker, The Headteacher's PA, The Stonehenge School, Holders Road, Amesbury, Wiltshire, SP4 7PW

Exam Invigilators

Scale B point 2, £12.65 per hour We require additional Exam Invigilators to work with us at The Stonehenge School. We are looking for enthusiastic and supportive individuals to work varied hours during the school day, mainly during GCSE exam periods but also covering internal and modular exams throughout the year. Must be available to work from 8.30 am to cover morning exams. Previous experience is not essential, as all training will be provided. Ideal candidates will be , reliable and flexible , have good communication skills , be confident and able to offer reassurance during exams.

SALISBURY SCHOOLS ART EXHIBITION 2026

13TH FEBRUARY -
21TH MARCH

FREE ENTRY

MONDAY: 10 AM - 7PM
TUESDAY: 9AM - 7PM
WEDNESDAY: 9AM - 5PM
THURSDAY: 9AM - 5PM
FRIDAY: 9AM - 7PM
SATURDAY: 9AM - 5PM
SUNDAY: CLOSED



SALISBURY LIBRARY, SP1 1BL

Rotary
Club of Salisbury

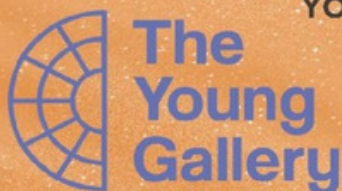


SALISBURY SCHOOLS ART EXHIBITION 2026

YOU ARE WARMLY INVITED TO THE PRIVATE VIEW

THURSDAY 12TH FEBRUARY 6PM- 8PM

Celebrating the visual arts made in local schools



SALISBURY LIBRARY, SP1 1BL

Rotary
Club of Salisbury



UK TOWN OF CULTURE 2028

We want to hear your thoughts!

Scan the QR
to take part



Youth Survey

Adult Survey



The UK Town of Culture Competition is an opportunity for Amesbury to **use our culture and creativity to tell our story** and why we are **proud of our community**.

We are seeking feedback and thoughts from **you**, to understand what you would like to see in an Amesbury Town of Culture year.

Deadline for Feedback: **28th February 2026**

AMESBURY
TOWN COUNCIL

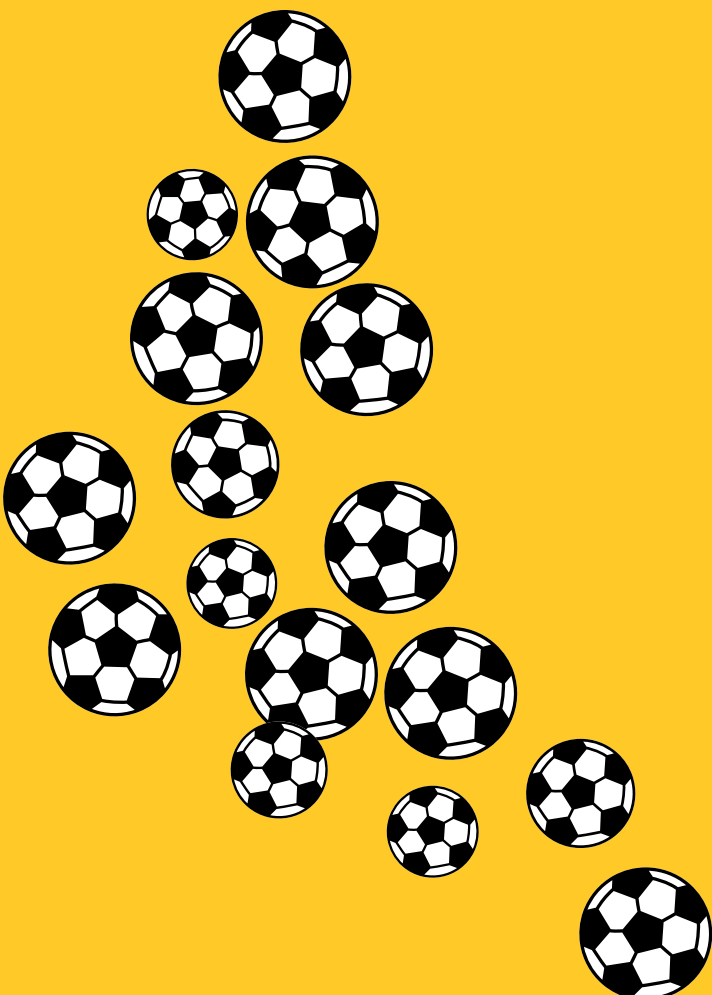


FOR FURTHER INFORMATION PLEASE EMAIL:

TownofCulture@amesburytowncouncil.gov.uk

OR VISIT OUR WEBSITE:

www.amesburytowncouncil.gov.uk/town-of-culture



HALF TERM FOOTBALL CAMP

"We sent our children to several football camps run by Brad and Josh. They provide great coaching and lots of encouragement."
"Great value for what they receive."
"Highly Recommend"

SCAN ME

TIME & LOCATION

Tuesday 17th February
9AM - 3PM
Thursday 19th February
Bulford Village Hall, SP4 9DY
Early Drop off, Late Pick up ✓

OPEN TO AGES 6 - 14 YEARS ALL ABILITIES

Contact Us:
Message Brad or Josh.
Google Forms link

JS COACHING
BW Performance

Turn your daily shopping into everyday magic for us with easyfundraising

You shop, brands donate to us. It won't cost you any extra!



 easyfundraising

Help us make a difference when you shop.
Visit www.easyfundraising.org.uk



- 1 Visit www.easyfundraising.org.uk
- 2 Sign up and search for us
- 3 Your favourite brands donate to us whenever you shop with them

Shop with 8,000+ brands including:

Booking.com

ebay

M&S

GROUPON



TUI

JOHN
LEWIS



Viking

ASOS



Uber Eats