



THE STONEHENGE

SCHOOL

Weekly Newsletter

Issue No. 11 | 27th November 2025

UPCOMING DATES NOVEMBER

Message from the Headteacher

DECEMBER

Reminder About Respectful Behaviour in the Local Community

Mon 1st & Tues 2nd
Year 10 - Catering Milestone

Wed 3rd
The Woman In Black Trip

Thurs 4th
STEM Yr 9 & 10
FTC Scrimmage Robot Club
Trip

Mon 8th - Fri 12th
Year 9 - Milestone 1

Fri - 19th
END OF TERM
EARLY CLOSURE 12.30
BUSES AND TAXIS AT 1.00
PM

We have recently been contacted by the Military Representative for the Service Families Accommodation (SFA) community near Boscombe Down regarding reports of anti-social behaviour in that area involving groups of young people. These incidents were serious enough for families to contact the police, and some of those involved were believed to be pupils from local schools, including Stonehenge.

We are therefore asking all parents and carers to please remind their children about the importance of behaving responsibly when out in the community, particularly around residential areas. As you will appreciate, MOD housing and the surrounding grounds are private property, and families living there have the right to feel safe and undisturbed in their homes.

We are working closely with local partners to monitor the situation and support our pupils to make positive choices. Your support in reinforcing these messages at home is greatly appreciated in helping us maintain strong relationships with our local community.

Have Your Say - Annual SEND Survey 2025 (for parents/carers)



Families play an essential role in shaping SEND services, and Wiltshire Council is inviting all parents and carers to share their experiences in the Annual SEND Survey 2025.

👉 Parent/carer survey link:
[click here](#)

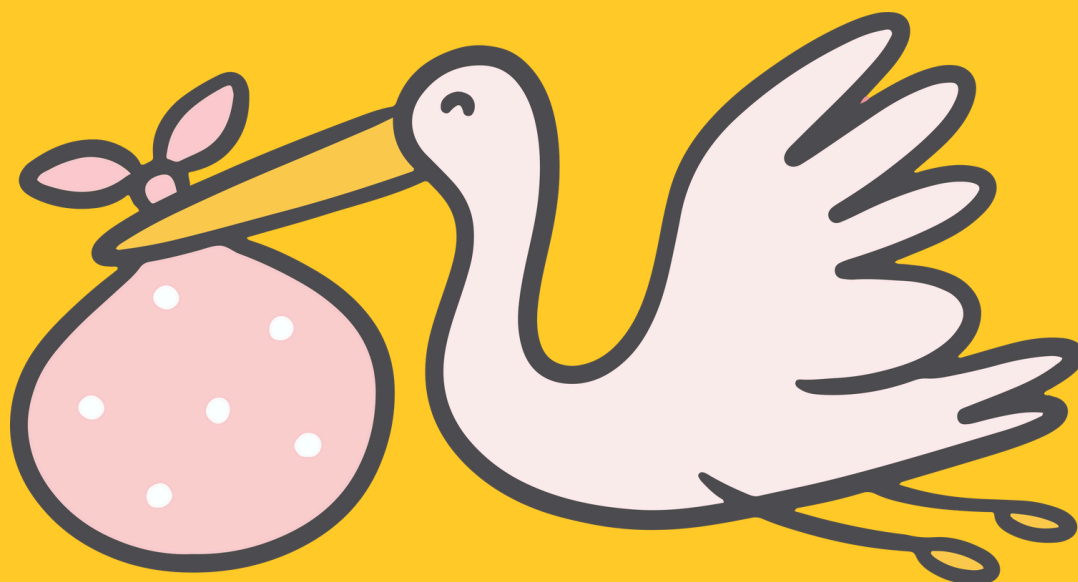
Your feedback helps the Local Authority understand what is working well and what needs to improve to better support children, young people, and families across Wiltshire.

Thank you for your time and support – your voice genuinely makes a difference.



Redworth Pupils Take on the ASDAN Foodwise Challenge.

Our pupils recently completed their ASDAN Foodwise tasks, which involved finding a healthy recipe on a £5 budget, shopping for ingredients and returning to school to cook their chosen dish. The students showed fantastic enthusiasm throughout and ended the lesson by sharing their delicious creations together around the table. A great example of team work, creativity and practical life skills in action!



We are delighted announce the safe arrival of Lilah Rose Williams who was born on Friday 21st November weighing 6lb 13 oz
Congratulations to Ms Williams, both mother and daughter are both doing well.



Christmas Lunch

£3.75

Turkey

£3.75

Pigs in Blankets

(wheat)

Glamorgan Sausage(V)

(wheat)

Roast Potatoes

Peas

Carrots

Yorkshire Pudding

(wheat, eggs, milk)

Stuffing Balls

(wheat, eggs, milk)

Cranberry Sauce

Vanilla & Chocolate

Ice Cream

(milk)



CHRISTMAS LUNCH



Wednesday 10th December - Year 7

Thursday 11th December - Years 8 and 9

Fri 10th December - Years 10 and 11

These are now available to book for Christmas lunch on Parent Pay. Please note that space is limited so early booking is advised.

FSM students should have received a Microsoft form via Classcharts make sure you respond to this form if your child requires a Christmas lunch

STAFF VACANCIES

Further details and an application form for all our vacancies can be found on our website via the following link - <https://www.stonehenge.wilts.sch.uk/vacancies/>

Informal visits to the school are welcome; please contact the Head's PA, Debra Harker on 01980 676660 or e-mail harkerd@stonehenge.wilts.sch.uk

You should provide detail outlining your skills applicable to the role and reasons for applying. This should be returned to Mrs D Harker, The Headteacher's PA, The Stonehenge School, Holders Road, Amesbury, Wiltshire, SP4 7PW

OFFICE MANAGER

The Governors of The Stonehenge School are seeking to appoint a highly organised, proactive and experienced Office Manager to lead our busy administration team at this thriving secondary school. Our Admin Team is the central hub of the school providing exceptional support to students, staff, parents and visitors every day. The team includes three Reception Administrators, a Medical Administrator and an Attendance Officer, all dedicated to ensuring the smooth running of the school.

Salary: Wiltshire Grade G 12 -14 - £26,281 – £28,051 (actual salary)

Hours: Mon – Thurs 8.00am – 4.00pm and Fri 3.30pm

Contract: Term time only (39 weeks) plus 2 additional weeks to be worked during the first week and the last week of the summer holidays to prepare for the new academic year.

Start Date: 26th January 2026

Closing date - Friday 5th December 2025 9.00 am

Interview date - Tuesday 16th December 2025

Responsible to: Business Manager

Contract Type: Permanent

Did you know

90%

attendance
means your
child has
missed

19

days
and

100


lessons
in a year?

Honeyguide


CAREERS NEWSLETTER

This newsletter is a collation of all the opportunities we have heard about from employers and universities. Please use the links included to read more information and apply to anything you are interested in. Links are underlined.


OPPORTUNITIES



Open Doorstake you behind the scene to showcase the fantastic range of careers available in construction. On Monday 23rd - Saturday 28th March 2026 across all types of construction sites, as well as training and manufacturing facilities, depots and offices – online sessions will also be available. Bookings will open on Monday 12th January 2026.




Go Construct provides resources for anyone looking for a career in the construction and built environment sector. With so many roles available in construction it can be hard to know where to start, why not learn more about these career options... Find a role for you.




This virtual work experience gives you a behind-the-scenes look at how Arcadis engineers, designers, and project managers solve some of the world's biggest challenges. You'll explore the history and future of architecture and infrastructure, meet professionals shaping our built environment, and reflect on how your skills could make an impact.



Bowmer + Kirkland is one of the UK's most successful construction and development companies. Discover life in pre-construction, construction management and commercial, and hear from the experts at the forefront of it all. Find out more here.



Join AtkinsRéalis and you'll work on global projects across diverse sectors, tackling today's most pressing challenges. From growing populations and transportation needs to climate change – you'll help merge ingenuity, knowledge and technology to uplift communities and engineer a safer, better tomorrow. Explore roles here.



Discover how adventure can build the skills needed to lead, inspire, and make a difference. This session on Wednesday 14th January - 10:00 - 11:00, explores real stories from expedition leaders who've faced challenges in the world's most extreme environments. Learn how teamwork, resilience, and problem-solving in the wild translate into powerful lessons for leadership in any career path.

JOB OF THE WEEK



As a building surveyor, you'll complete detailed reports, known as building surveys. Within these, you'll identify defects and advise on repair, maintenance and restoration options. You may implement preventative measures to keep buildings in good condition and look for ways to make buildings sustainable. A large proportion of the working day spent on site.

LABOUR MARKET INFORMATION FACT

For Young People aged 16-24, employment levels are up by 17,000. The employment rate has increased by 0.2%, now at 52.2%. This means there were 3.89 million young people in employment in July to September 2025. Source _____

If you have any questions or need support, please email office@stonehenge.wilts.sch.uk

THE STONEHENGE
SCHOOL

CAREERS NEWSLETTER

OPPORTUNITIES

EMPLOYER SPOTLIGHT

"The built environment is always evolving, and McLaren are at the forefront of that change. As we expand into new sectors, we are looking for the next generations of True Builders, to contribute to our continued success and take on a rewarding career in construction. If you're looking to be part of a dynamic, forward-thinking company, there are a variety of early talent opportunities waiting for you." Find out more [here](#).

UNI SPOTLIGHT

"Join an inspiring and collaborative community that champions individuality and student support. At the University of Roehampton, you'll enjoy future-proof courses designed with leading employers, industry experts teaching you from day one and professional-standard facilities to prepare you for the world of work." Read more [here](#).

Brighton University are hosting an Interview preparation talk and Q+A on Thursday 11 December 17:00-18:00. Get advice from staff and current students about what to expect and how to get ready for your interview. Book your place [here](#).

Exeter University's 'Discover University' platform provides information, advice and guidance aimed at prospective students. They are hosting a Free Webinar focused on the UCAS Process on Monday 5th January 18:00 - 19:00. Browse more events and [book here](#).

Join the Tesco Early Careers team on Monday 8th December at 16:00 to learn about the apprenticeships available, what is involved, the benefits available, and more. Don't worry if you can't make it on the day, [sign up anyway](#) and they'll send you the recording so you don't miss out.

On Tuesday 20th January from 13:00 - 14:00, you can discover everything you need to know about the BA(Hons) Illustration course at Falmouth University. In the session, they will explore what you will learn on the course, and how online study works. Book your place [here](#).

Are you ready to gain new skills and future proof yourself for any career? Whether you're planning to enter the workforce after secondary school, sixth form, college or as a university graduate, the Digdata programme invites you to gain [virtual work experience](#) with [their partners](#) BTEC Higher Nationals, like the Higher National Certificate (HNC)

BTEC Higher Nationals, like the Higher National Certificate (HNC) and Higher National Diploma (HND), career-focused qualifications equal to the first two years of an undergraduate degree or foundation degree. Read this guide to [learn more](#).

Do you dream of shaping the skylines of tomorrow? Is your passion the history and future of our evolving landscapes? Join 3D Reid for two action packed days, 2nd - 3rd March 2026 to dive into the dynamic world of architecture. Apply by the 13th February.

If you have any questions or need support, please email office@stonehenge.wilts.sch.uk

Late Night Shopping

Every Thursday in December

📍 **Salisbury City Centre**

Enjoy exclusive offers, live performances and festive surprises with big brands and indie favourites staying open late.

SHOP LATE
**04, 11 & 18
DECEMBER**



Support Local. Support Salisbury this Christmas.

DONATIONS NEEDED

Christmas Jumper Day

19th December 25'

DO YOU HAVE ANY UNWANTED
CHRISTMASSY JUMPERS?

To ensure no pupils are left out
of the fun, we are asking for
donations to stock on our
Uniformd site.

These will be free to claim
(1 per pupil)



THE STONEHENGE
SCHOOL



Family and Community Learning

Understanding School Anxiety

Early Signs of Emotional Barriers to School Attendance

Online Course

Co-taught with education psychologist



Booking essential!
Booking closes
one week before
course date

Course Overview

- Strategies to support with anxiety and worry
- Strategies to support attendance
- Advice on reasonable adjustments that schools can make

Friday 12 December 10am - 12pm

Contact familyandcommunitylearning@wiltshire.gov.uk
Visit <https://workwiltshire.co.uk/family-and-community-learning/>
Call the FACL team on 01225 770478
or scan the QR code



Courses are no cost to learners who meet our eligibility criteria. Learners must be aged 19+ on 31 August this academic year; they must have a Wiltshire postcode and meet certain residency requirements. Learners must also be able to tick one of the following criteria: on a lower income, earning less than £25,750 a year; in receipt of benefits (other than child benefit); be a care leaver, foster carer or carer; be a military family or ex-armed forces personnel; have refugee status; have a learning difficulty or disability; be looking to go into work, now or in the future.

Wiltshire Council



STONEHENGE SCHOOL

WINTER BOOK EXCHANGE 2025

CHOOSE A GREAT BOOK TO ENTER INTO THE EXCHANGE

If you buy one, don't spend more than £2
These are gifts that you are giving to other students.
Make sure you would be happy to receive them yourself
and that they would be appropriate for any student.

BRING YOUR BOOK TO THE LIBRARY GIFT WRAPPING STATION

3 House points for **each book** accepted
You can give as many books as you like -
earning 3 House points for every book accepted.
Gift books must be processed by the library team
otherwise you won't get the House points.

ORDER A TICKET FROM THE CLASS CHARTS REWARDS STORE

Join us on the 19th of December
to exchange and read books together
You don't need to give a book into the exchange
to order a ticket from the Rewards Store.

All books for the exchange must be given in
by the end of lunchtime on Friday the 12th
of December to give us time to process them.

The Exchange will take place in the library
on the last day of term, tickets will not be sold after
Sunday the 14th of December.

SATURDAY 20TH DECEMBER 2025 AT
12.00 PM

Chamber Choir Concert: Advent and Christmas

Experience the joy of Christmas with the
Winchester Cathedral Chamber Choir.



Time Out For Parents - Children with Additional Needs

Are you a parent/carer for a child (or children) with additional needs? This course was written for you!

Come and meet other parents/carers to support, help and encourage each other to share feelings and experiences about your child with additional needs.

Discuss and share ideas that support you to come up with solutions to problems and behaviours that challenge on the basis of what works – not what's meant to work!

(No formal diagnosis required)

Join us virtually
via Microsoft Teams
Friday 23rd January to
Friday 20th March
Excluding
Friday 20th February
10:00-12:00



Scan QR code to
register your interest

Got questions? We've got answers!

Your nurses are here to help-
no worries too big or too small!

- Healthy eating & nutrition
- Sleep tips & routines
- Emotional wellbeing & stress
- Sexual health & relationships
- Bedwetting & toileting support

The Community
Pantry
Old Sarum and
Longhedge
Community Centre
Wednesdays
9.30-10.30am



**Join us at the
Community
Health drop-in!**

or children and young people
5-19 and their families
No appointment needed!



Merry Christmas!



December Timetable

All sessions delivered live online via zoom. 90 minutes long

£24 each or FREE with School Membership

Book online at facefamilyadvice.co.uk

Recordings available for 48 hours (excluding Free Talk)

Decreasing Depression	1 DEC 10am
Raising Self Esteem	1 DEC 7pm
Understanding the Teenage Brain	2 DEC 10am
Supporting Healthy Sleep	2 DEC 7pm
Autism - Improving Communication	8 DEC 10am
Improving Family Communication	8 DEC 7pm
Supporting A Child with ADHD	9 DEC 10am
Understanding Addictive Behaviour	9 DEC 7pm
Anxiety Based School Avoidance	15 DEC 10am
Understanding Anger	15 DEC 7pm
Supporting Healthy Screen Use	16 DEC 10am
Facing Defiance	16 DEC 7pm

Turn your daily shopping into everyday magic for us with easyfundraising

You shop, brands donate to us. It won't cost you any extra!



 easyfundraising

Help us make a difference when you shop.
Visit www.easyfundraising.org.uk



1 Visit www.easyfundraising.org.uk

2 Sign up and search for us

3 Your favourite brands donate to us whenever you shop with them

Shop with 8,000+ brands including:

Booking.com

ebay

M&S

GROUPON



TUI

JOHN
LEWIS



Viking

ASOS



Uber Eats