



THE STONEHENGE

SCHOOL

Weekly Newsletter

Issue No. 37 | 11th July 2025

UPCOMING DATES

JULY

18th - 20th
DofE Silver qualifying
expedition (Year 10)

Tues 22nd
Sports Festival

Thurs 24th
LAST DAY OF TERM,
EARLY CLOSURE 12.30
PM

BUSES AND TAXIS AT
1.00 PM

Thank You - Digital Inclusion Project

We're really pleased to share that The Stonehenge School has received 50 refurbished laptops through Simplyhealth's Digital Inclusion Project. Simplyhealth is a long-standing UK company that helps people with everyday health costs, and they also do amazing work supporting schools and communities.

This generous donation means more of our pupils will have access to a device at home and in school, helping them to keep up with schoolwork and feel confident in their learning.

A huge thank you goes to Mrs Smith, who made this possible for our school. Her support has made a real difference to our families, and we're so grateful.

Mrs Dean

Simplyhealth Donates 50 Laptops to Support Stonehenge School's Dyslexia-Friendly Journey

On behalf of Simplyhealth, I was delighted to donate 50 recycled laptops to Stonehenge School to support its fantastic work helping students with dyslexia thrive.

This visit was particularly special to me. I have had the pleasure of supporting the school on its journey to achieving official 'dyslexia-friendly status,' a milestone that reflects the team's dedication to creating a truly inclusive and supportive learning environment. It was inspiring to see firsthand the passion and care that goes into ensuring every student feels understood, empowered, and equipped to succeed.

At Simplyhealth, giving back to our communities is a core part of who we are. Each year, we donate over £1 million to charitable causes, focusing on improving access to health, wellbeing, and education for young people across the UK.

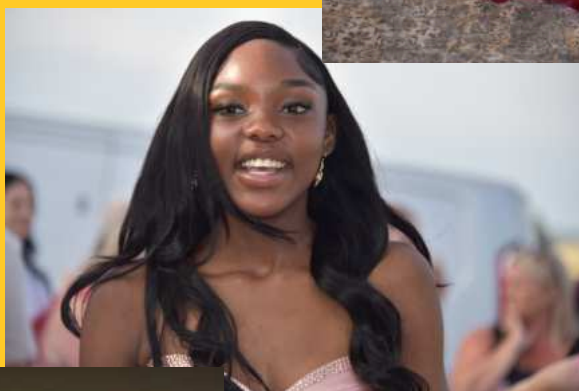
We're incredibly proud to have played a small part in Stonehenge School's ongoing mission to support all learners. We look forward to seeing how these laptops help students continue to grow, achieve, and shine.

Claire Smith, People Support Manager at Simplyhealth



Prom Night

2025





We welcomed two new additions to the world of The Stonehenge School. Miss Brewer's new baby to be known as 'George' (on the left) and Mrs Lawrence's to be known as 'Caelan' (on the right).

Both babies and mum's doing well and we send our congratulations to them.

Notice to Parents:

We would like to inform you in advance that the Drove Gate (on Cold Harbour Road) will be permanently locked starting in September 2025.

We apologise for any inconvenience this may cause.
Please use alternative entrances at either Antrobus Road or Holders Road moving forward.

Thank you for your understanding and cooperation.

Saying Goodbye...

As we get close to the end of the academic year, we often see students moving during the Summer holidays ready to start new schools in September. If your child(ren) will not be returning to us in September and you have NOT already made us aware, please send an email to office@stonehenge.wilts.sch.uk confirming their name, leaving date, new address if applicable and the name of their new school.



RACE TO THE LINE CHALLENGE

Last week our Year 7 students took part in the Race to the Line Challenge, transforming the school into a hive of engineering, creativity, and friendly competition - what an incredible day!

Armed with rocket car kits and plenty of imagination, teams worked together to design, build, and decorate their own model racers. The Main Hall was buzzing with energy as students carefully assembled their cars, adding colourful touches with felt tips, stickers, and cotton wool - strictly no glitter allowed!

The grand finale was a spectacular event. The whole year group gathered on the basketball courts to watch the cars launch down the track at thrilling speeds. Cheers and applause erupted as teams competed to see whose car was the fastest.

We're delighted to announce that the winners will be revealed during the upcoming Reward Assembly. Prizes will be given for the top three fastest cars, as well as for Best Branding (chosen by Miss Freemantle) and Best Design (chosen by Mrs Dean).

It was fantastic to see so much teamwork, problem-solving, and STEM enthusiasm on display. A huge thank you to all staff involved, and to our brilliant Year 9 STEM Ambassadors (Emmanuel, Jamie, Jayan and Molly) who kept everything running smoothly.

Congratulations to all our young engineers for their amazing efforts - we can't wait to celebrate the winning teams!

Full details of the day can be found on our website via the following link - https://www.stonehenge.wilts.sch.uk/app/uploads/2025/07/Sport-festival-home-communication-2025_-002.pdf



July 22nd

Sport Festival 2025

Home communication

Day format and catering options:

Dear Students and Parents/Carers,

We are thrilled to continue with our new format for our annual Sports Day, now called the Sport Festival, designed to involve and engage more students in a wider variety of activities. Considering our school's increasing size and rising costs, we have revamped the Sport Festival to ensure it continues to be a key event in our school calendar.

Venue and Format

This year, the Sport Festival will take place at Holders Road Playing Fields, our secure and well-maintained grounds. This new format enables us to provide a variety of activities that appeal to a broader spectrum of interests, encouraging more students to take part and enjoy the activities.

Event Details:

- All year groups: Tuesday, 22nd July.
- Registration & P1: With tutor completing house activities
- 10:00 – 14:30: Holders Playing Fields.

Students will compete in House tournaments/events (athletics, touch rugby and rounders) and choose from various festival activities (see next page) in specially designated areas.

Important Information:

- Students are required to wear their school PE kit; failure to do so by wearing the incorrect kit will result in disqualification from participation
- Students must attend morning registration as usual and will remain at Holders for the duration.
- We recommend bringing caps, suntan lotion, and plenty of water.
- Each student will receive one bottle of water.
- An ice cream van will be on-site, and in response to student feedback, there will also be food stalls featuring a burger and hotdog van and a mobile coffee van.
- Please ensure your child brings any necessary medication, such as asthma inhalers, to the event.



Read Easy

Helping adults learn to read



Do you know someone who struggles to read?

one-to-one reading coaching for adults. People can learn to read or improve their reading skills at their

please contact:

Jocelyn: 07942 382318

readeasy.org.uk

SAFE SCHOOL ZONE

Help keep
our school
community
safe

Disabled parking for the use
of visitors to the school only



For drop off & collection
please use car parks at:



Tesco



B & M



Please do not drive
through the school site



Please do not use
visitor parking spaces

**CARS AND KIDS
DON'T MIX**



THE STONEHENGE
SCHOOL



Support Team STEMHenge!

Amesbury's FIRST Tech Challenge Robot Team

We're a group of students from The Stonehenge School
designing, building, and coding a robot for the 2025 *FIRST
Tech Challenge UK*, DECODE season.

We are aiming to raise £2,000 for:

- ☒ Robot parts and electronics
- ☒ Travel to competitions
- ☒ Entry fees and event costs
- ☒ Team branding and outreach
- ☒ Repairs for the robot



www.crowdfunder.co.uk/p/stemhenge

Your support helps us develop our STEM skills and
represent our local community on a national stage.



Every pound brings us closer
to competition!

Scan the QR code to donate
- it's fast, secure, and every
donation makes a difference!

Thank you for helping us
DECODE the future!

Team STEMHenge,
The Stonehenge School

1,200-Mile Walk for Ukraine

Kyle, James and Adam have set off on a long walk to
Ukraine to raise money and bring aid to Ukrainian children
and families.

The three boys are walking across countries to bring
awareness to the crisis that Ukraine is currently facing.

All proceeds will go towards blankets, food packs and
medical support for children and families in need.

Our goal:

Raise £10,000 for Ukrainian children and families affected by war
Deliver aid during a week-long visit to Ukraine



How you can help:



Follow the journey
on Instagram!

Support and
donate!



The Stonehenge School have partnered with Wiltshire Library Service to promote and celebrate their Story Garden Summer Reading Challenge 2025



The Summer Reading Challenge is for children up to and including 12 years old to read six books (or the equivalent) over nine weeks of the summer - in return for various prizes. The free challenge will run in Wiltshire libraries from Saturday 5 July to Saturday 6 September. The first two weeks (5 to 19 July) will be for registration only; from Monday 21 July children can start to collect stickers (and continue to register). Children must be library members to take part – it's free and easy to join, for more information pop along to Amesbury Library or visit: wiltshire.gov.uk/libraries-join-the-library.

The 2025 theme is: Story Garden – Adventures in Nature and the Great Outdoors, which will inspire children to tap into a world of imagination through reading, exploring the magical connection between storytelling and nature. When registering children will receive their own Story Garden sticker booklet to record their reading and as they finish reading books – will receive stickers for each one read, plus a certificate a badge on completion.

Although the challenge is to read six books, there is flexibility in this number, especially for children who struggle with reading or read longer books. Children can read any books of their choice; they don't have to be linked to the theme and they can read/listen to eBooks and audiobooks as well. It's all free and can make a real difference to a child's motivation and enjoyment of reading. Books on the official 'Story Garden Book Collection' list are available to reserve and borrow for free from any Wiltshire library. The list includes a mix of fiction (picture books, early readers and middle grade titles), non-fiction, poetry and graphic novels, plus several dyslexia-friendly books.

Children can also visit summerreadingchallenge.org.uk, where they can use the Book Sorter to discover new books, find fun reading activities and active challenges, play games, watch videos and write book reviews.

For children who want a further challenge and those older than 11 we have the Story Adventurers' Club, a personal reading challenge where children set their own reading goals, the target to read 100 books. For children aged under 4, we have a fun family book sharing challenge called 'Story Sharers'.

For any Year 7 pupil who participates in this brilliant opportunity The Stonehenge School will reward their efforts and achievements. Pupils need to keep their booklet and certificates safe and bring them to their new English Teacher in September. Every pupil that participates will receive house points and edible goodies. Every participant will also be entered into a prize draw where 5 lucky pupils will win a book vending machine voucher!

For more information contact Amesbury library 01980 623491 or email: amesburylibrary@wiltshire.gov.uk

STAFF VACANCIES

Further details and an application form for all our vacancies can be found on our website via the following link
- <https://www.stonehenge.wilts.sch.uk/vacancies/>

Informal visits to the school are welcome; please contact the Head's PA, Debra Harker on 01980 676660 or e-mail harkerd@stonehenge.wilts.sch.uk

You should provide detail outlining your skills applicable to the role and reasons for applying. This should be returned to Mrs D Harker, The Headteacher's PA, The Stonehenge School, Holders Road, Amesbury, Wiltshire, SP4 7PW

Teaching Assistants x 2

Required as soon as possible
31 hours per week/39 working weeks per year (including all 5 TD Days)
Permanent Contract
Monday - Friday 8.30am -3.00pm, (30 minutes unpaid lunch)
+ 1 hour after school club each week
Closing date - Monday, 14th July 2025 9.00 am
Interview - Friday, 18th July 2025

Due to staff progression and increase in pupil numbers, we are looking to recruit enthusiastic people to become an essential part of the Teaching Assistant team here at The Stonehenge School.

The role requires you to support the learning of specific students with additional educational needs either within the classroom or 1:1, or in intervention groups. You will be working as part of a supportive team.

Further details and an application form can be found on our website via the following link -
<https://www.stonehenge.wilts.sch.uk/vacancies/>

Caretaker

Salary: Support staff grade E £25,183 - £25,992 per annum with 26 days holiday to be taken in school holidays
Hours are to be discussed with the successful candidate but would be 37 per week, working Monday - Friday

The post will be effective as soon as possible; this is a permanent position.
This position will remain open until filled

We are seeking to recruit a reliable, enthusiastic, and efficient Caretaker to join our Site Team to be responsible for maintaining our school premises.

You will support the Premises Manager to keep the school a safe and engaging environment for our students to learn in. This will involve carrying out both reactive and planned maintenance tasks which may include some plumbing and decoration both internally and externally.

Exam Invigilators

Scale B point 2, £12.26 per hour

We require additional Exam Invigilators to work with us at The Stonehenge School. We are looking for enthusiastic and supportive individuals to work varied hours during the school day, mainly during GCSE exam periods but also covering internal and modular exams throughout the year. Must be available to work from 8.30 am to cover morning exams.

Previous experience is not essential, as all training will be provided.

Ideal candidates will be , reliable and flexible , have good communication skills , be confident and able to offer reassurance during exams



Family and Community Learning

Supporting My Teen With Wellbeing

Online Course

Booking essential



- Understand the changes in a teenage brain
- Learn techniques to promote wellbeing
- Explore positive psychology

**Friday 19 September 10am - 12pm or
Friday 14 November 10am - 12pm**

Booking closes one week before the course

Contact familyandcommunitylearning@wiltshire.gov.uk
Visit <https://workwiltshire.co.uk/family-and-community-learning/>
Call the FACL team on 01225 770478
or scan the QR code



Our courses are free if you are 19+ years old, resident in the UK/EU for over three years (some immigration status exempt, including resettlement schemes), have a Wiltshire postcode, and meet any of the following criteria: earn less than £25,000 pa, in receipt of benefits, military or ex-military family, foster carer/care leaver/carer, have a disability or learning difficulty.

Wiltshire Council

E-scooters & electric bikes - do you know the law?



E-scooters are classed as motor vehicles under the Road Traffic Act 1988.

You therefore need to have:

- A driving licence
- Insurance
- MOT and Tax

It is against the law to ride them on the roads/ pavements or in public spaces. This includes car parks and play parks.

Legal electrically assisted pedal cycles can be ridden by people over 14 years old. To be compliant with the law:

- It must have pedals which you need to turn to propel it
- It should have a motor of 250 watts or less
- The electrical assist should cut out at 15.5 mph

If it doesn't meet these criteria, it is classed as a motor vehicle and needs a licence, insurance, MOT and tax to be ridden legally.

If you use an e-scooter or e-bike against the law, you run the risk of it being seized and destroyed. You may also be prosecuted.



Wiltshire and Swindon
pcc

Wiltshire Family Hubs

Family Hub
Wiltshire Council

All Together
Supporting families in Wiltshire

Issue 6 - 2025

www.wiltshirefamilyhubs.org.uk

Supporting Families with children with SEND

At The Family Hub, we understand the unique challenges faced by families with children with Special Educational Needs and Disabilities (SEND). Our commitment to providing tailored support and resources is at the heart of everything we do. From parenting courses and informational Let's Talk Sessions to sensory spaces, we are here to empower families on their journey.

Did you know we offer parenting courses to support families with children with SEND?

For parents of children aged 3-12 years

and

For parents of teenagers

Go to our website page to find out more and to register your interest. [CLICK HERE](#)

Visit the page on our Website for more information about support available and for a list of specialist services in Wiltshire.

[CLICK HERE](#)

Sensory Play Spaces
available free in our Flag Ship Hubs-
talk to us about what you need.



Summer Safety



A BBQ and the ground underneath it can stay hot enough to cause a serious burn for a long time after it's been used. So stay alert and keep children well away from the cooking area until it's completely cooled

Open windows warning

- Keep low furniture away from windows so that children can't climb up and fall out.
- Install window catches to limit how far they can open.



Click here for more information

[child accident prevention trust](#)

Contact us by email:
wiltshirefamilyhub@spurgeons.org

Contact us by phone:
0800 970 4669

For parents/carers of children with or without additional needs.

6-11 Years

Need some ideas on how to support your child to cope with CHANGE?

Join us for an engaging session to explore how to:

- Recognise the signs of change in your child's life
- Understand the impact of those changes on their wellbeing
- Explore effective strategies to support your child through transitions

Whether it's starting school, moving home, or changes in routine, learn how to guide your child with confidence and care.

For more information
contact us on:
0800 970 4669



Or scan
to find else
what else we
offer!

www.wiltshirefamilyhubs.org.uk
Wiltshiretogether.org.uk/AllTogether

Drop in...

**Monkton Park,
Monkton Hill, Chippenham, SN15 1ER
Tuesday 15th July 2025, between 10am-1pm.**

**County Hall,
Bythesea Road, Trowbridge, BA14 8JN
Thursday 17th July 2025, between 10am-1pm.**

**Five Rivers Leisure Centre,
Hulse Rd, Salisbury, SP1 3NR
Wednesday 23rd July 2025, between 10am-1pm.**

In partnership with...

Spurgeons
Together with families

Wiltshire Council

Support We Offer

We are here to help with a whole range of topics including:

Ideas around implementing routines and setting boundaries.

Help to understand your child's needs and build your confidence as a parent.

Help around finances, housing applications, debt support and accessing benefits.

Supporting you 'back to work'

Volunteering opportunities

We can help families access:

Baby Bundles

Healthy start vitamins

Advice on local childcare and applying for funding.

Introductions to other services

Facebook

Our Wiltshire Family Hub Facebook page is another way for families to stay up to date with current services. Make sure you like and follow to stay in touch with us.

Simply click here:



Get in touch with us

If you have any questions or would like more information about our services please call us on one of our numbers below or check out our website:

Freephone:

0800 970 4669

wiltshirefamilyhub@spurgeons.org

Other useful numbers:

Health visitor - Single Point of Access

0300 247 0090

National Breastfeeding helpline

0300 100 0212

Fearfree (Domestic Abuse support Service)


01225 775276

National Domestic Abuse Helpline
0808 2000 247



Click here to visit
our website

www.wiltshirefamilyhubs.org.uk

THE STONEHENGE
SCHOOL Listen to this newsletter

CAREERS NEWSLETTER

This newsletter is a collation of all the opportunities we have heard about from employers and universities. Please use the links included to read more information and apply to anything you are interested in. Links are underlined.

OPPORTUNITIES



Take a look at [Engineering Development Trust's programmes](#) that help you to learn more about STEM careers, the skills you need to succeed and how you can access different job roles. There is a free programme (scroll to the bottom of the page) but some are paid for, please contact EDT if you feel you may be eligible for a bursary funded place. EDT also have paid work placements in the STEM industries. You will gain invaluable [experience working in industry](#), develop their skills and knowledge, and boost their future employability. Discovering Durham University is a podcast show run by students. The marketing team asked students what their most important issues were when considering the University, and [they came up with five episodes](#). Explore 2,400 Higher and Degree apprenticeship vacancies in the January 2025 edition of the Higher and Degree listing. Discover vacancy details from over 80 employers, including locations, salary information and direct application links. The Higher & Degree Listing is a bi-annual publication, with the next release due in [October 2025](#). This [blog shows how at risk the top 20 jobs in the UK are of AI Job Displacement](#). From Administrators to Nurses to Programmers, take a look & see what risk score each role has! Take a look at this webpage full of different job roles! Click on each one to enlarge it and read more. Hire Ahead is a new apprenticeship search platform. We are not sure why there are [so many](#), it is [hard to keep up!](#) However, it is [good to know about](#) all of them to ensure you are seeing all the opportunities available.

JOB OF THE WEEK



[Investment Banker](#)

Investment bankers are financial advisors for corporations and other large organisations. Investment bankers often help companies and other entities raise or borrow money for expansion and improvement.

Watch the video to learn more about how much you could earn, working hours and pathways into the industry.

LABOUR MARKET INFORMATION FACT

According to The Student Room, over 40% of their forum members now actively consider a degree apprenticeship alongside traditional university study. But uni is still viewed as "more fun."

Source

If you have any questions or need support, please email office@stonehenge.wilts.sch.uk

THE STONEHENGE
SCHOOL

CAREERS NEWSLETTER

OPPORTUNITIES



urfuturehave built a new app that helps you to connect with employers. The app has not replaced all employer's recruitment processes yet (maybe one day!) so it's not quite time to ditch the CV just yet. We just want to ensure you're aware of all the platforms and support systems in place to help you on your journey.

"Right now, you might have just finished school, the sun is shining, and the last thing you want to be doing is stressing about



your future career. That's why we're here: to help make this summer your best one yet, just by signing up to our Talent Community. By joining our Talent Community, you'll be one of the first to know about our 2026 Apprenticeship opportunities. At KPMG, we offer Apprenticeship programmes in areas like Audit, Tax & Law, KPMG Business Services, Technology & Engineering and Consulting, where you can make the difference to businesses and communities."

Here are a few websites that you can use to find university open days:



- UCAS
- OpenDays.com
- UniTasterDays
- The individual university's websites



If you need help deciding which university/course is right for you, this guide from UCAS will prove useful and this list of 20 things you can compare may also help your decision making.



If you speak a second (or third or fourth...) language, you may be way ahead in terms of your cognition. But did you know it can also help you get ahead in your career? Being bi-lingual or multi-lingual are significant in terms of everything from pay and performance to your thinking and your relationships. You can read more about this here.

In next week's newsletter, we'll be giving you a challenge per week that you can do over the 6 week break to help prepare for your future!

EMPLOYER SPOTLIGHT

"At the John Lewis Partnership, home to both retail favourite, John Lewis and supermarket leaders, Waitrose, you become more than just an employee, you become a Partner – a co-owner in our unique business. Whether you're passionate about retail, tech, logistics, or anything in between, we have a range of exciting opportunities." Read more about John Lewis Careers here.

UNI SPOTLIGHT

"Your time at Essex will be full of opportunities to meet new people, try new things and develop new skills. Your success is at the heart of everything we do. What's more, did you know The University of Essex is first in the East of England for overall positivity*? Or that we're 23rd in the UK in the Guardian University Guide 2025?" Read more about University of Essex's Courses here.

If you have any questions or need support, please email office@stonehenge.wilts.sch.uk



DEVIZES *Music* ACADEMY

SCHOOL OF ROCK IN DEVIZES!

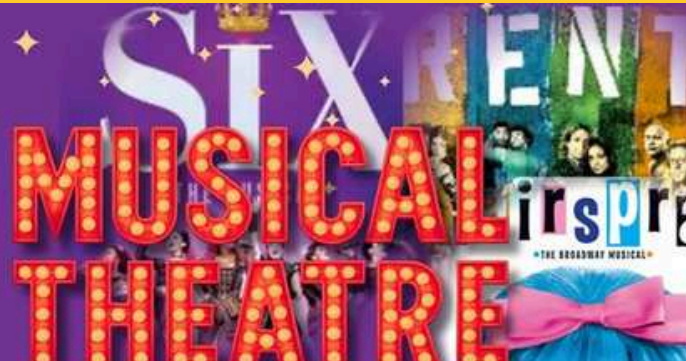
Devizes Music Academy – 6th–8th August
10am–2.30pm daily | Ages 10–15 | Beginners & Intermediates

Join our 3-day School of Rock where you'll rehearse, jam, and perform some absolute anthems: Another One Bites the Dust, Shotgun, and Valerie with our awesome teachers Jake, Yiannis and Jemma

LIMITED SPACES FOR:
3 x Drummers/Percussionists
2 x Keyboardists
8 x Guitarists (including bass)
7 x Vocalists

£100 for all three days, with Final Showback: Friday at 3pm!

Let's make some noise!
Book your spot now – before they're gone!
Email jemma@fto.org.uk today!

SIX RENT MUSICAL THEATRE

Singing SUMMER SCHOOL


A week of singing massive musical theatre hits!

4th - 8th August - 9:30 till 3:00
Showcase 8th August 3.30pm

To book, email jemma@fto.org.uk or visit ticketsource.co.uk/dma
£100 for the week - Ages 12- 18

DEVIZES *Music* ACADEMY

7A BATH ROAD,
BUSINESS CENTRE,
BATH ROAD, DEVIZES,
SN10 1XA




Wiltshire Community Foundation

NEED HELP WITH THE COSTS OF TRAINING OR AN APPRENTICESHIP?

Wiltshire Community Foundation offers grants of up to £1,000 for young people who need support with the costs of vocational training for courses at school, college or sixth form or for training through an apprenticeship.

Grants can be used towards:

- educational resources or equipment
- IT equipment
- course related study/field trips
- travel costs.

You can apply for a grant if:

- you, your parents or guardians receive one means-tested benefit or you are in the care of the local authority
- you are 24 or under at the time of application
- you have been living in Wiltshire or Swindon for at least two years*
- will be studying at school, college, sixth form or doing an apprenticeship.

*There are some exceptions to this so please call us to discuss.

For more information visit our website www.wiltshirecf.org.uk or call 01380 738985.
Registered charity no. 1123126



ENROL NOW



STAGE
COACH

SALISBURY & AMESBURY



SHOW IN A WEEK SUMMER WORKSHOP

DATE: 28 JULY - 1 AUGUST

TIME: 9.45AM - 3.45PM

AGES: 4 - 6 YEARS

COST: £203

(SIBLING/BOTH £182.70)

9-5 WRAP-AROUND CARE AVAILABLE

DATE: 28 JULY - 1 AUGUST

TIME: 10AM - 4PM

AGES: 6 - 18 YEARS

COST: £210

(SIBLING/BOTH £189)



Scan the QR code to book.

MAD ON MUSICALS SUMMER WORKSHOP

DATE: 11 - 15 AUGUST

TIME: 10AM - 4PM

AGES: 4 - 18 YEARS

COST: £210 (SIBLING /BOTH £189)

9-5 WRAP-AROUND CARE AVAILABLE

CHILDCARE
VOUCHERS
ACCEPTED

Enquire for more information email: salisbury@stagecoach.co.uk visit: www.stagecoach.co.uk/salisbury

SUMMER HOLIDAY FUN ACTIVITIES

WEEKDAYS 23RD JULY TO 2ND SEPTEMBER
Flight themed crafts 10am -12.30pm



28th July - FUN SCIENCE

have a go at some flight science themed activities by making some paper rockets and helicopters
10.00 - 14.00

6th August - Three Bees Project

Make friends with the therapy goats, snuggle up with Tiger-Lily and laugh at the antics of Elvis and Neil!
10.00 - 14.00

5th, 10th & 21st August - Model Making

All ages invited to learn how to make & paint plastic models at our model making sessions with Models for Heroes
10.00 - 15.00

24th July & 14th Aug - VR HEADSETS

Have a go with our VR headsets and take a virtual walk around an Apache helicopter. Age restrictions at parent's discretion
10.30 - 12.00 and 13.00 - 14.00

31st July & 21st Aug - DRESS LIKE A SOLDIER

Have fun dressing up in our collection of camo clothes. It's a great photo opportunity!
10.30 - 12.00 and 13.00 - 14.00

7th and 28th Aug - OBJECT HANDLING

Investigate a range of interesting and thought provoking objects from World War II.
10.30 - 12.00 and 13.00 - 14.00

13th Aug - MECCANO AT THE MUSEUM

Feast your eyes on some fantastic Meccano models and then have a go yourself at making a model of your own design.
10.00 - 14.00

26th AUG - KOOKY & KITSCH KARTOON CLASSROOM

Have fun in our first cartoon workshop with free fun activities including learning how to draw cartoons.
10.00 - 14.00



armyflying.com

01264 781086



FUEL

The free holiday activity and food programme

Science and Technology

Creative Arts

Animal Care

Dance and Gymnastics

Sports and Games

Summer 2025
Booking now open

Hot Meal provided

Outdoor Pursuits

Skateboard and Scooter



Booking Essential



[Click here for more information and booking](#)




Camp Locations

Upto sixteendaysateachlocation from 28July


Malmesbury
St Joseph's Catholic Primary School
Chippenham
Sheldon School
The Rise Community Hub
Corsham
The Pound Arts Centre
Springfield Campus
Bradford on Avon
Fitzmaurice Primary School
Melksham
Melksham Community Campus
Forest and Sandridge School
Trowbridge
St Augustine's Catholic College
West Wilts Gymnastics
Rode Common Farm
Westbury
Westbury Leigh Primary School
Westbury Skate Park
Brokerswood
Warminster
Warminster Sports Centre
Codford
Wylie Coyotes
Mere & Zeals
Youth Centre
Zeals Pavilion




Cricklade Skate Park
Purton Ridgeway Farm CE Academy
Royal Wootton Bassett Lime Kiln Leisure Centre
Wootton Bassett Infant School
Calne Calne Leisure Centre
Marlborough Marlborough Leisure Centre
Marlborough Skate Park
Pewsey The Vale Community Campus
Devizes Devizes Leisure Centre
Tidworth Wellington Lions Academy
Amesbury Amesbury Sports Centre
The Bowman Centre
Durrington Avon Valley College
Wilton Castle Meadow Pavilion
Salisbury Sarum Academy
Salisbury Arts Centre




FOOD
F IS FOR FOOD! YOU WILL RECEIVE A NUTRITIOUS LUNCH EACH DAY AND YOU'LL ALSO HAVE FUN AND KEEP FIT.



UNITY
UNITY MEANS MAKING NEW FRIENDS IN YOUR COMMUNITY, WHILE FRIENDLY STAFF ARE SUPPORTIVE AND UNDERSTANDING.



ENERGY
TAKE PART IN A RANGE OF ACTIVITIES THAT WILL KEEP YOU ENERGISED, EXERCISED AND EDUCATED.



LAUGHTER
THERE WILL BE PLENTY OF OPPORTUNITIES FOR FUN AND LAUGHTER THROUGHOUT THE PROGRAMME AND OPPORTUNITIES TO LEARN NEW LIFE-SKILLS.

WALLOP WHEELS & WINGS



Saturday 12th July 2025
10.00am to 4.30pm

Join us for our ever-popular, annual fundraising event- Wallop, Wheels and Wings . For our fifth year, we will once again welcome a spectacular array of historic aircraft, classic and super cars, motorbikes and much more for a fantastic day for all the family.



Platinum Sponsor



armyflying.com

Gold Sponsor

AIRBUS

01264 781086

Charity number 297897

Turn your daily shopping into everyday magic for us with easyfundraising

You shop, brands donate to us. It won't cost you any extra!



easyfundraising

Help us make a difference when you shop.
Visit www.easyfundraising.org.uk



Download on the
App Store



GET IT ON
Google Play

1 Visit www.easyfundraising.org.uk

2 Sign up and search for us

3 Your favourite brands donate to us
whenever you shop with them

Shop with 8,000+ brands including:

Booking.com

ebay

M&S

GROUPON



TUI

JOHN
LEWIS



Viking

ASOS



Uber Eats



Family and Community Learning

Supporting My Teen With Wellbeing

Online Course

Booking essential



- Understand the changes in a teenage brain
- Learn techniques to promote wellbeing
- Explore positive psychology

**Friday 19 September 10am - 12pm or
Friday 14 November 10am - 12pm**

Booking closes one week before the course

Contact familyandcommunitylearning@wiltshire.gov.uk
Visit <https://workwiltshire.co.uk/family-and-community-learning/>
Call the FACL team on 01225 770478
or scan the QR code



Our courses are free if you are 19+ years old, resident in the UK/EU for over three years (some immigration status exempt, including resettlement schemes), have a Wiltshire postcode, and meet any of the following criteria: earn less than £25,000 pa, in receipt of benefits, military or ex-military family, foster carer/care leaver/carer, have a disability or learning difficulty.

Wiltshire Council