



THE STONEHENGE

SCHOOL

Weekly Newsletter

Issue No. 4 | 6th October 2023

UPCOMING DATES OCTOBER

Wed 11th
Matilda

Thurs 12th
Matilda

Fri 13th
Matilda

Fri 13th
Year 9 Geography Trip to
Portsmouth

Wed 18th
House Day

Wed 18th
Final day of term

Thurs 19th to Fri 27th
Half Term

Mon 30th
TD Day

Headteacher's message.....

The Department for Education have released updated information relating to the exams that Year 11 sat last year. It takes a while to calculate the measure called progress 8 because it relies on comparing all schools across the Country. We are incredibly proud to announce that our progress 8 measure is +0.01 which places us just ever so slightly above National Average. This is a fantastic achievement by our staff and students, particularly in a year that meant pupils who had undergone the turmoil of the pandemic sat exams that were assessed at pre-pandemic levels. This adds additional testament to the fact that the education we provide at The Stonehenge School really does ensure that students fulfil their true potential with us and are given the life chances that they need for the next part of their lives.

Our current Year 11 have had a busy week. On Tuesday we were joined by 'Live n Learn', a company who specialise in motivation and teaching study skills. They worked with the year group throughout the day, who also completed specialist revision sessions for Maths, Science and English, as well as well-being activities and a survey to unlock their sense of Vision, Effort, Skills, Practice and Attitude. They have also been on a rewards trip to Thorpe park (postponed from the summer term), as a nice fun experience before the real hard work starts for the rest of the academic year.



Within our Vision and Mission statement we look to create global citizens, and as a school we pride ourselves in creating a strong sense of community between the whole school. Last week's whole school charity walk epitomises this philosophy, with all year teams walking a 9 mile trek through the local countryside, with views across to our ancient namesake. Pupils and staff get to egg each other on, share the experience and work through some of the challenges of the local environment. Thank you for all of the money donated to our school charity The Dog's Trust - it makes the sore legs worth it!

Could I please use this message to provide some polite reminders to parents:

- Please do not drop/pick-up pupils at the front of our main building - they can be dropped at B&M or Tescos. Lots of traffic in front of school makes it potentially unsafe, especially when 1060 pupils are leaving at the end of the day and then parents want to drive through them
- School starts at 8:30am. There has been a large number of late pupils in the last couple of weeks. Perhaps this is an adjustment to the change in the school day. After half term we will issue after school detentions for poor punctuality so please help them to ensure they are here on time.
- We have an absolute ban on Mobile Phones. This has been the case for years. They will be confiscated and kept for parental collection if they are seen at all between 8:30am and 3pm. Please support your child in helping them to meet this expectation. please refer to the Mobile Phone policy reminder within.
- Please do not come to reception to see any staff members unless you have an appointment - staff simply will not be available to see you. Please refer to the Home-school communications policy on our website.

MOBILE PHONE POLICY (REMINDER)

Mobile Phones are expensive accessories which may become a target for thieves.

The school does not accept any responsibility for mobile telephones, iPhones, iPods or any headphones. If students choose to bring these into school parents must ensure they have adequate insurance in place. It is a disciplinary offence to use any of these items in a lesson. When students carry mobile phones switched on in school, they distract the owner and others from their learning.

During the school day, from 8.30am until 3pm, mobile phones may not be used at all and must be switched off. Students are expected to keep their phone out of sight during these hours and not to make them visible at any time.

Should you need to urgently contact your child—emergency contact may be made via Reception—our staff will send a message swiftly to the student concerned. However, if a student needs to make an urgent phone call they should see a member of staff and this can be arranged.

Under no circumstances may mobile telephones ever be used to take photographs, videos, or other media capture of staff or other students. Examples of irresponsible phone use include the following:

a) Cyber bullying, sexting, inappropriate use of social media / chat rooms - even if the content is posted outside of school, because the problems caused by these actions frequently affect the school culture and orderly running of the school

b) Students phoning parents during the day to report feeling unwell, or to report bullying or other problems, without speaking to a member of staff. This is exacerbated by parents who then come directly into school and expect staff to be available to deal with the matter immediately.

Breaches of the expectations above will result in the confiscation of the phone. Other than in exceptional circumstances the phone will be retained safely until a parent is able to collect it.

PHASE 2 IN ALL ITS GLORY!!



For the attention of all parents

Will your child be transferring
to a secondary school in
September 2024?

You must apply for a secondary school place

Apply online at **wiltshire.gov.uk** or
complete an application form, available at
all Wiltshire Council offices.

The deadline for applications is

12 midnight, 31 October 2023

All forms must be returned to the school admissions
team at County Hall, Trowbridge, Wiltshire.

Contact customer services on **01225 713010**

For more information or to request our guide
to finding a secondary school place in Wiltshire.



On Thursday 5th October, 166 Year 11 students enjoyed a day out at Thorpe Park. They were lucky enough to visit on a day when it was very quiet and therefore queuing wasn't really necessary. They enjoyed the thrills of Stealth, Saw and Nemesis, and even some of the staff got to enjoy them too. Fears were conquered and thrills were had. We also had an additional member of the group on our way home!

Those who were invited had to meet certain criteria regarding behaviour and attendance in the weeks leading up to the trip, and we were pleased that the vast majority managed to reach the set standard. This standard was also demonstrated on the day: the behaviour and conduct of the students was impeccable and they were a pleasure to take out.

We are hoping to plan more events for Year 11 to enjoy before they leave, so watch this space!

Mrs Blake
Assistant Headteacher





Amesbury police have asked us to write to all parents regarding anti-social behaviour that has been occurring in the local area over the past couple of weeks.

The ASB (anti-social behaviour) has included violently kicking the front doors of dwellings bordering Harvard Park, Amesbury, banging on windows, shouting abuse at passing members of the public, spitting and suspected drug dealing. Several Stonehenge School pupils have been identified as being present in the park at the same time these offences have taken place, but so far police have not been able to directly associate them to the acts. The area currently remains on a Priority Patrol for all local Amesbury Police officers.

They have received multiple calls and reports to the location between 19:00-23:00 over the past two weeks, with officers deployed for each of these. On Saturday 23/09/2023, up to 40 x youths had gathered on the park area causing issues and needed to be moved on by officers as a result. Some were local to Amesbury, whilst others had travelled from Salisbury, Durrington, Larkhill and Bulford. Of concern to the Police was the fact that many stated they had told parents they were staying at friends for a sleep over, had gone to a club/group/cinema/organisation, or to the local shops. It is the police's belief that many parents and guardians are unaware of the exact location and nature of what their children are doing when out of the home address late in the evenings. During our patrols we have located youths aged between 14-17 years of age still causing ASB in Harvard Park past 22:00 at night.

The recent ASB, involving local youths aged 14-17 years, is having a hugely negative affect on local residents. It is parents' responsibility to ensure that they are aware of their children's whereabouts at all times, to consider what time is appropriate for them to be out in open public areas late at night unsupervised, and to have an awareness of the current Police interest in this issue.

Coming Soon

The Stonehenge School Presents
An Amateur Performance of...



SHOW COMMENCES AT 7.00 PM

ROALD DAHL
Matilda
THE MUSICAL JR.

11th - 13th October 2023

This amateur production of "Matilda The Musical Jr." is presented
by arrangement with Musical Theatre International Europe.

**TICKETS NOW AVAILABLE VIA
PARENTPAY**



STONEHENGE MONUMENT

Did you know, local people can visit Stonehenge for free? As part of an historic agreement which English Heritage honours to this day, people living in the parishes surrounding Stonehenge can apply for a Local Resident Pass. Find out more and apply online at <https://www.english-heritage.org.uk/visit/places/stonehenge/plan-your-visit/stonehenge-local-residents-pass/>

November they are running an event in connection with Cambridge University which they are calling The Festival of Neolithic Ideas, details are below.

Come along to the very first Festival of Neolithic Ideas at Stonehenge on 11th and 12th November and get involved with an outstanding programme of hands-on activities, demonstrations, talks and tours, led by experts in the field.

From radiocarbon dating and ancient DNA, to astronomy and laser scanning, we will reveal how the latest advances in science and archaeological techniques have developed our understanding of Stonehenge and the people who built it. The festival will also explore the tools and technologies used by Neolithic people to understand and shape the world around them.

Included with General Admission ticket to Stonehenge. Book online and save 10%. <https://www.english-heritage.org.uk/visit/whats-on/stonehenge-festival-of-neolithic-ideas/>

SCIENCE CLUB



This week we will be investigating how temperature affects how sugars dissolve.

When: Wednesday 11th October

Where : Room 32

Time : 3.00- 4pm

Please sign up on Class Charts.



SALISBURY YFC

NEW MEMBERS

EVENING

Young Farmers is for anyone aged 10-28 yrs old. Our members are not just farmer's children, they come from all walks of life, but share a common interest in rural life. Weekly meetings take place on Fridays across Salisbury and include a variety of sports, farm tours, talks, workshops, demonstrations, parties and pub socials!



**JOIN US AT 7PM ON
FRIDAY 6TH OCTOBER
AT RIVER BOURNE
COMMUNITY FARM**

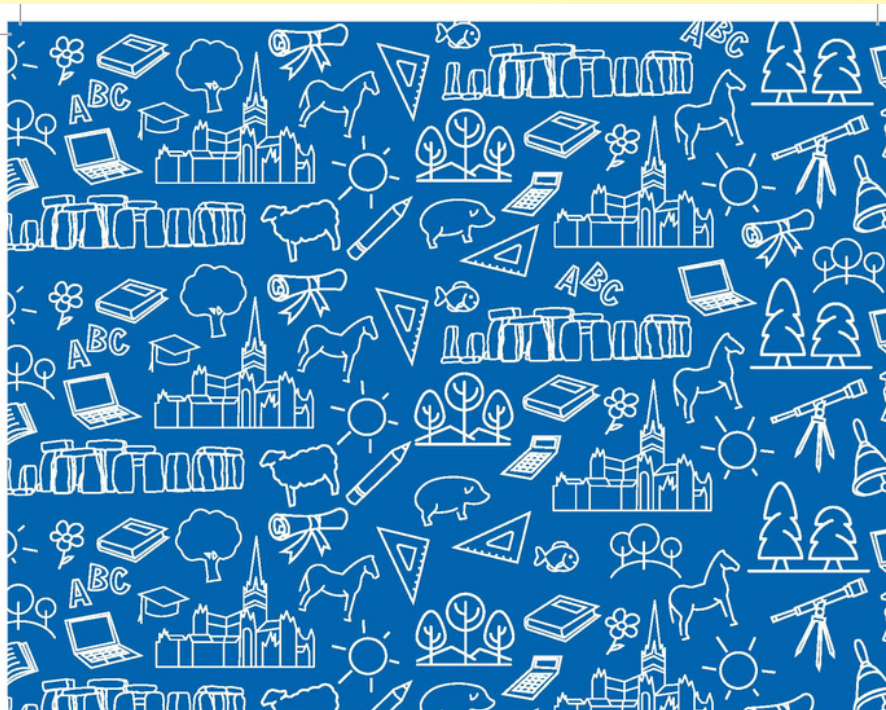
**FEATURING HUMAN HUNGRY HIPPOS
AND OTHER FUN ACTIVITIES!**



salisbury_yfc



Salisbury & District Young Farmers Club



Need to speak to a SEND Officer at Wiltshire Council? For help with Education, Health and Care Plans for children and young people up to the end of Year 9 in the South of Wiltshire...

Please contact the South SEND team.

From 1 October 2023 Call **01225 712620** where you will be given the option to reach a member of the South Team to discuss your query.

Available **Monday-Thursday, 9am-4:30pm, Friday 9am- 4pm.**

Or email: EHCPSouthteam@wiltshire.gov.uk

Please note that all annual review documentation now needs to be sent through to SEND.annualreviews@wiltshire.gov.uk



Find out more
about the team

Wiltshire Council



Need to speak to a SEND Preparation for Adulthood/Post 16 Officer at Wiltshire Council? For help with Education, Health and Care Plans for young people year 10 and above.

Please contact the PFA/Post 16 SEND Team.

From 1 October 2023 Call **01225 712620** where you will be given the option to reach a member of the PFA/Post 16 Team to discuss your query.

Available **Monday-Thursday, 9am-4:30pm, Friday 9am- 4pm.**

Or email: EHCPPFAPost16@wiltshire.gov.uk

Please note that all annual review documentation now needs to be sent through to SEND.annualreviews@wiltshire.gov.uk



Find out more
about the team

Wiltshire Council

DofE registration deadlines

Bronze Award (open to all year 9 pupils): 9th October

Silver Award (open to all year 10 pupils): 19th October



Make a difference - become a Parent Governor **Why become a Parent Governor?**

Governors have an important part to play in helping schools to run effectively. They work as part of a team with the Headteacher and school staff to help provide a happy, safe and thriving learning environment and an excellent education for all the children.

As a Parent Governor, you will be well placed to understand parents' views and have first-hand knowledge of how the school is run. You will have the opportunity to work toward improving the school experience not only for your own child but for children in years to come.

This voluntary role can be challenging yet extremely rewarding and is a great way to build on your personal and professional skills. You will be supported in the role through a programme of training and mentoring allowing you to use your knowledge and experience to the full extent.

What will you do?

You will work with the school to develop the school's vision and priorities, review educational performance and make strategic decisions.

Parent Governors are representative parents rather than representatives of parents. You will not be expected to gather the views of other parents and take them to Governors meetings or to personally become involved in individual concerns. You will need to be able to present a balanced and impartial view, based on the benefits for all children.

Governor meetings are held six times a year and may be combined with school visits focused on school priorities. You will receive reports from the headteacher and senior leaders and need to be able to question, challenge and support decisions. You will also be expected to visit the school as a governor which can be a quite different experience to visiting as a parent!

The governing body operates a code of conduct which sets an ethos of professionalism and high expectations of governors.

What are we looking for?

We need enthusiastic and committed parents from a variety of backgrounds. You do not need leadership or education experience; just a desire to give back to the school and its community and a proactive approach to becoming involved as a member of a team.

Next steps

If you are interested in finding out more, please contact Kevin Taylor, Clerk to the Governors, at taylorlk@stonehenge.wilts.sch.uk

STAFF VACANCIES

Full details on all the above vacancies can be found on our website at
<https://www.stonehenge.wilts.sch.uk/vacancies/>

TEACHER OF ENGLISH

We require a qualified teacher of English to join an expanding department, for the delivery of English at KS3 and GCSE. As part of the English department and a member of The Stonehenge School, you will be part of a supportive and reflective team of dedicated professionals who continually improve and develop their practice in order to achieve the best for the young people at our school.

This is an excellent opportunity for an ECT seeking a first appointment, or a more experienced teacher.

TEACHER OF ART

We are seeking to appoint an enthusiastic and innovative Teacher of Art to work within our expanding Art and Technology department.

The post would suit an ECT or more experienced teacher. ECT statutory induction is provided and the successful candidate will be working within a supportive and experienced department, who continually improve and develop their practice in order to achieve the best for the young people at our school.

We are looking for colleagues with:

- A commitment to raising achievement
- The ability to engage and support students
- Enthusiasm and good knowledge of the subject/s
- A commitment to help all young people and staff to achieve their best is expected of all staff.

**EXAMS INVIGILATORS - PART TIME VACANCIES, TO START AS SOON AS POSSIBLE (WOULD SOMEONE WHO HAS RETIRED OR LOOKING FOR VARIED HOURS)
SCALE B POINT 1, £10.50 PER HOUR (PAY AWARD PENDING)**

We are looking for people to join our team of invigilators. You would need to work varied hours during the school day, mainly during GCSE exam periods but also covering internal and modular exams throughout the year. Must be available to work from 8.30 am to cover morning exams.