



THE STONEHENGE

SCHOOL Weekly Newsletter

Issue No. 3 | 29th September 2023

UPCOMING DATES SEPTEMBER

Fri 29th
Charity Walk

OCTOBER

Tues 3rd
Year 11 Success Evening

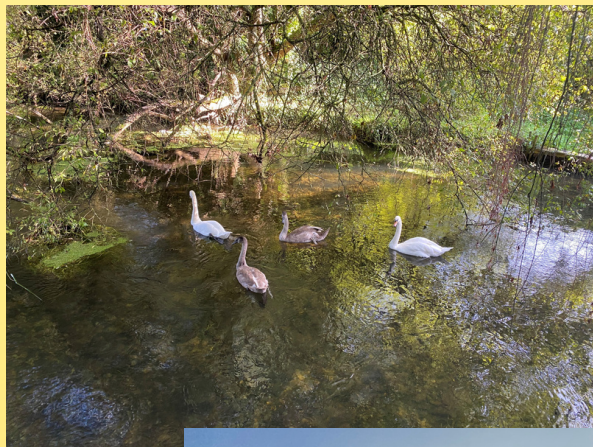
Thurs 5th
Year 11 Trip to Thorpe
Park

Thurs 5th
SEND trip to Legoland

Thurs 5th
DofE Bronze Award
Ceremony & Silver
information evening
(5.45 - 6.45 pm)

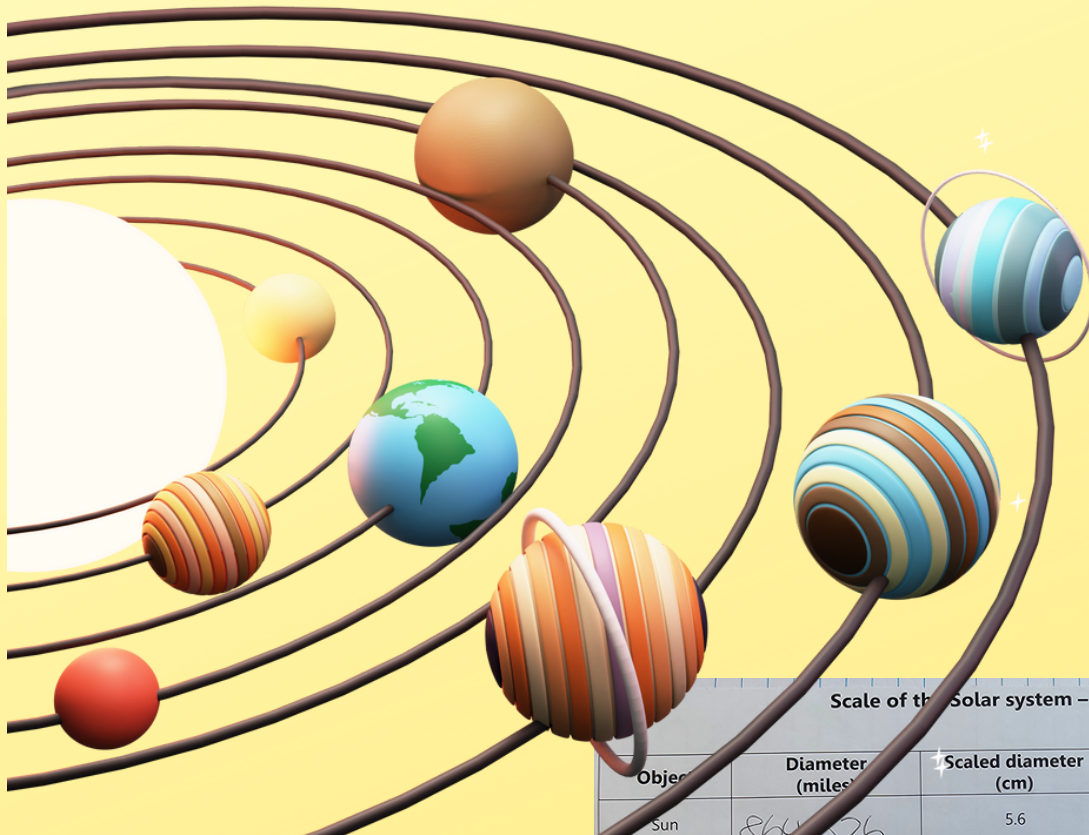
CHARITY WALK

Our students took part in our annual Charity Walk through the countryside surrounding Amesbury. students and staff had an amazing time walking the 9 mile route. A few pictures below and more to follow next week.



Scaling the Solar system

On Wednesday the Year 9 Astronomy group drew a scale model of the Solar system which stretched from upper to middle school. We used a small ball to represent the Sun and scaled everything down using some tricky maths to produce the table which showed the distances we needed to measure. Each planet was named with its diameter and distance from the Sun given in miles. Thank you to Mrs Dean for letting us graffiti the school.



Scale of the Solar system – calculation table				
Object	Diameter (miles)	Scaled diameter (cm)	Distance from the Sun (miles)	Scaled distance from the Sun (cm)
Sun	864,876	5.6	0	0
Mercury	3,032	0.016	36.2M	1.93
Venus	7,546	0.04	67.6M	3.58
Earth	7,927	0.042	93.5M	4.93
Mars	2,172	0.012	124.4M	7.57
Jupiter	86,881	0.48	483.6M	25.91
Saturn	75,355	0.4	886.3M	47.59
Uranus	31,418	0.17	1,784M	95.69
Neptune	30,797	0.16	2,855M	149.98

Cooler Weather Uniform

With the temperature dropping, a reminder that black V neck jumpers may be worn AS WELL AS a blazer. However jumpers should not be worn instead of a blazer.

A reminder also that hoodies, and tech fleece should not be worn instead of blazers.



For the attention of all parents

Will your child be transferring
to a secondary school in
September 2024?

You must apply for a secondary school place

Apply online at **wiltshire.gov.uk** or
complete an application form, available at
all Wiltshire Council offices.

The deadline for applications is

12 midnight, 31 October 2023

All forms must be returned to the school admissions
team at County Hall, Trowbridge, Wiltshire.

Contact customer services on **01225 713010**

For more information or to request our guide
to finding a secondary school place in Wiltshire.

[illegible]

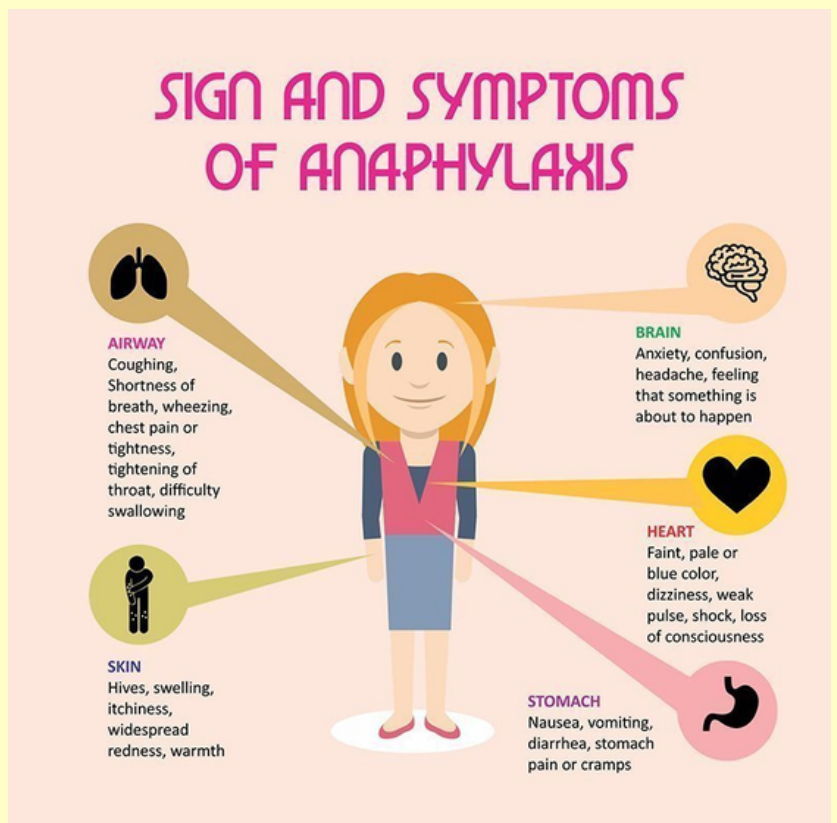
The chosen books just arrived this week and it was wonderful to see the excitement when students received their books!

Next week is anaphylaxis awareness week. We have 9 pupils in school who require an epi pen. I've been in discussion with a mum today and one of the complaints/ concerns around her child is that in all the time we have had her here there has been nothing sent home to parents about the dangers this can present. (I don't remember doing anything but even if we did it would be wise to revisit it. This would seem an opportune time to flag up to staff and families the dangers of ect. (I know we have training but it probably doesn't hurt to revisit it in lots of ways)

SIGN AND SYMPTOMS OF ANAPHYLAXIS

The infographic features a central illustration of a woman with blonde hair, wearing a pink vest over a blue long-sleeved shirt and a blue skirt. Five callout lines radiate from her body to different organs, each with an icon and a list of symptoms:

- AIRWAY** (lungs icon): Coughing, Shortness of breath, wheezing, chest pain or tightness, tightening of throat, difficulty swallowing.
- BRAIN** (brain icon): Anxiety, confusion, headache, feeling that something is about to happen.
- HEART** (heart icon): Faint, pale or blue color, dizziness, weak pulse, shock, loss of consciousness.
- SKIN** (person scratching icon): Hives, swelling, itchiness, widespread redness, warmth.
- STOMACH** (stomach icon): Nausea, vomiting, diarrhea, stomach pain or cramps.



Be Allergy Aware & Save a Life

Anaphylaxis is a serious and life-threatening reaction to allergens such as food, insect stings, medication & latex.

Recognise the **ABC symptoms** and act quickly - you could save a life.

WHAT TO LOOK FOR

A Air way

- Persistent cough
- Vocal changes (hoarse voice)
- Difficulty swallowing
- Swollen tongue

B Breathing

- Difficult or noisy breathing
- Wheezing (like an asthma attack)

C Consciousness/Circulation

- Feeling lightheaded or faint
- Clammy skin
- Confusion
- Unresponsive/unconscious (due to a drop in blood pressure)

WHAT TO DO



1. Lay the person flat - do NOT allow them to stand and walk

A. If unconscious, place them in the recovery position

B. If breathing is difficult, allow them to sit up

C. If they feel dizzy or appear pale, their legs should be raised



2. Administer an adrenaline auto-injector (refer to device label for instructions)



3. Phone 999 and tell them the person is suffering from anaphylaxis (ana-fil-axis)



4. If there is no improvement of symptoms after 5 minutes, a second dose of adrenaline can be given



01252 542029



info@anaphylaxis.org.uk



anaphylaxis.org.uk

Coming Soon

The Stonehenge School Presents
An Amateur Performance of...



ROALD DAHL
Matilda
THE MUSICAL JR.

11th - 13th October 2023

This amateur production of "Matilda The Musical Jr." is presented
by arrangement with Musical Theatre International Europe.

**TICKETS NOW AVAILABLE VIA
PARENTPAY**



STONEHENGE MONUMENT

Did you know, local people can visit Stonehenge for free? As part of an historic agreement which English Heritage honours to this day, people living in the parishes surrounding Stonehenge can apply for a Local Resident Pass. Find out more and apply online at <https://www.english-heritage.org.uk/visit/places/stonehenge/plan-your-visit/stonehenge-local-residents-pass/>

They also have an event coming up at the end of the month which is about Stonehenge's connection with Dahlias.

Something exciting is coming to Stonehenge! If you love history AND dahlias, you won't want to miss this... From Friday 29 September to Sunday 1 October, Stonehenge Visitor Centre will be transformed into a riot of colour. Find out more at www.english-heritage.org.uk/stonehenge

November they are running an event in connection with Cambridge University which they are calling The Festival of Neolithic Ideas, details are below.

Come along to the very first Festival of Neolithic Ideas at Stonehenge on 11th and 12th November and get involved with an outstanding programme of hands-on activities, demonstrations, talks and tours, led by experts in the field.

From radiocarbon dating and ancient DNA, to astronomy and laser scanning, we will reveal how the latest advances in science and archaeological techniques have developed our understanding of Stonehenge and the people who built it. The festival will also explore the tools and technologies used by Neolithic people to understand and shape the world around them.

Included with General Admission ticket to Stonehenge. Book online and save 10%. <https://www.english-heritage.org.uk/visit/whats-on/stonehenge-festival-of-neolithic-ideas/>



Would you like to find out more about dyslexia and the support available?



Please join us for this **FREE** event during Dyslexia Awareness Month!

Thursday 5th October 2023

11 am – 6 pm

County Hall, Bythesea Road, Trowbridge. BA14 8JN

Refreshments available

Assistive Technology Workshop - for parents/carers: 11 am – 1 pm

Please bring a laptop. [Booking essential](#) via WDA as spaces are limited.

Please email: caroline.fowke@btinternet.com

Free TeachMeet CPD event for school staff: 2 pm – 4 pm

[Booking essential](#) as spaces are limited. Please email: rachel.williams@wiltshire.gov.uk

Further details at [Right Choice \(wiltshire.gov.uk\)](#)

Find out about Wiltshire's Dyslexia Friendly Schools programme



Seek advice from information helpdesks



Exhibition includes resources and support available from:

scanningpens



Aventido





Need to speak to a SEND Officer at Wiltshire Council? For help with Education, Health and Care Plans for children and young people up to the end of Year 9 in the South of Wiltshire...

Please contact the South SEND team.

From 1 October 2023 Call **01225 712620** where you will be given the option to reach a member of the South Team to discuss your query.

Available **Monday-Thursday, 9am-4:30pm, Friday 9am- 4pm.**

Or email: EHCPSouthteam@wiltshire.gov.uk

Please note that all annual review documentation now needs to be sent through to SEND.annualreviews@wiltshire.gov.uk



Find out more
about the team

Wiltshire Council



Need to speak to a SEND Preparation for Adulthood/Post 16 Officer at Wiltshire Council? For help with Education, Health and Care Plans for young people year 10 and above.

Please contact the PFA/Post 16 SEND Team.

From 1 October 2023 Call **01225 712620** where you will be given the option to reach a member of the PFA/Post 16 Team to discuss your query.

Available **Monday-Thursday, 9am-4:30pm, Friday 9am- 4pm.**

Or email: EHCPPFAPost16@wiltshire.gov.uk

Please note that all annual review documentation now needs to be sent through to SEND.annualreviews@wiltshire.gov.uk

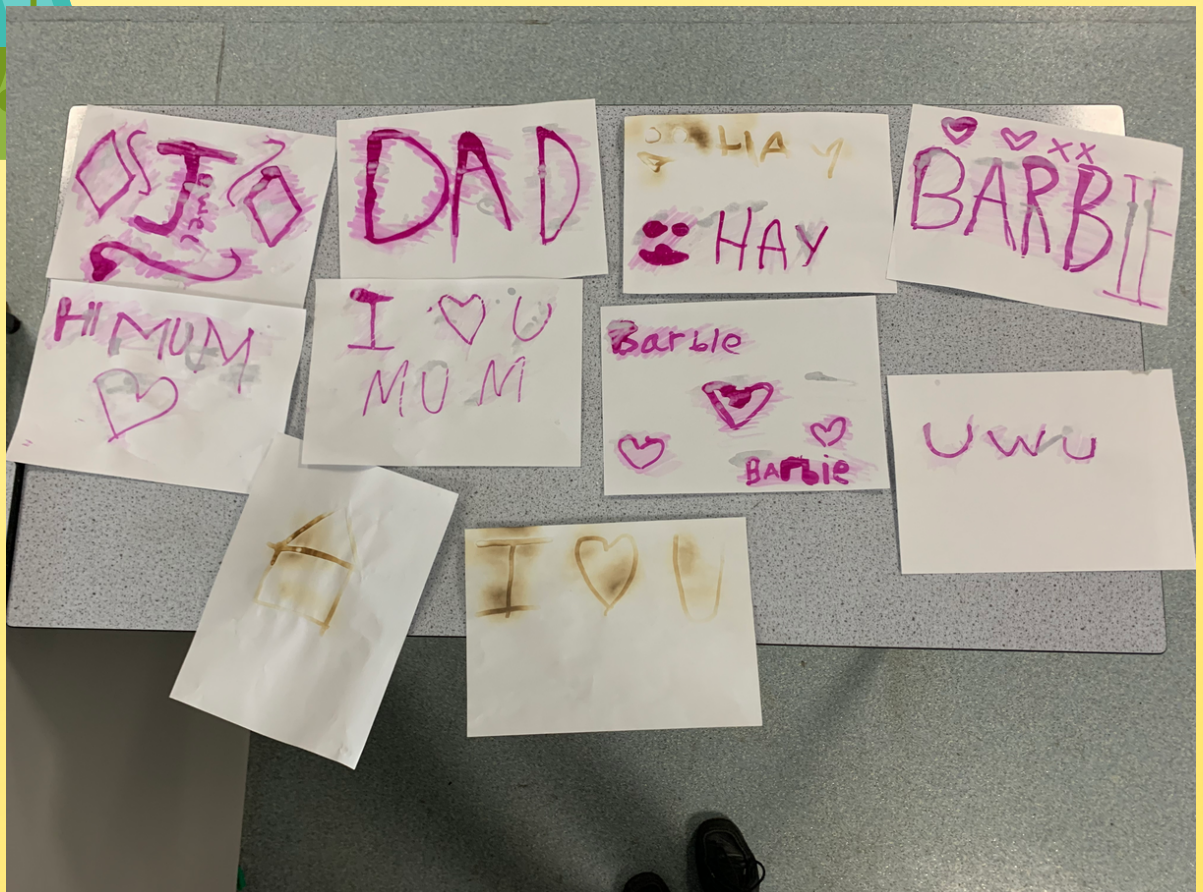


Find out more
about the team

Wiltshire Council



Deadline for registering for the Bronze Award for year 9s, is 9th October.



STAFF VACANCIES

Full details on all the above vacancies can be found on our website at
<https://www.stonehenge.wilts.sch.uk/vacancies/>

TEACHER OF ENGLISH

We require a qualified teacher of English to join an expanding department, for the delivery of English at KS3 and GCSE. As part of the English department and a member of The Stonehenge School, you will be part of a supportive and reflective team of dedicated professionals who continually improve and develop their practice in order to achieve the best for the young people at our school.

This is an excellent opportunity for an ECT seeking a first appointment, or a more experienced teacher.

TEACHER OF ART

We are seeking to appoint an enthusiastic and innovative Teacher of Art to work within our expanding Art and Technology department.

The post would suit an ECT or more experienced teacher. ECT statutory induction is provided and the successful candidate will be working within a supportive and experienced department, who continually improve and develop their practice in order to achieve the best for the young people at our school.

We are looking for colleagues with:

- A commitment to raising achievement
- The ability to engage and support students
- Enthusiasm and good knowledge of the subject/s
- A commitment to help all young people and staff to achieve their best is expected of all staff.

**EXAMS INVIGILATORS - PART TIME VACANCIES, TO START AS SOON AS POSSIBLE (WOULD SOMEONE WHO HAS RETIRED OR LOOKING FOR VARIED HOURS)
SCALE B POINT 1, £10.50 PER HOUR (PAY AWARD PENDING)**

We are looking for people to join our team of invigilators. You would need to work varied hours during the school day, mainly during GCSE exam periods but also covering internal and modular exams throughout the year. Must be available to work from 8.30 am to cover morning exams.