



Weekly Newsletter

Issue No. 18 | 27th January 2023

UPCOMING DATES JANUARY/FEBRUARY

Monday 30th
Year 11 Health & Social Care
Group
Retake exam

Monday 30th
Year 10 Poetry Live Trip
(Bath)

Tuesday 31st
Yr10 students have a maths
test. They will need a
calculator

Tuesday 31st lunch - girls'
compulsory DofE expedition
training in room 79.

Wednesday 1st - school
closed to Years 8, 9 & 10 due
to strike action

Thursday 2nd lunch - boys'
compulsory DofE expedition
training in room 79.

FEBRUARY
Friday 10th
END OF TERM



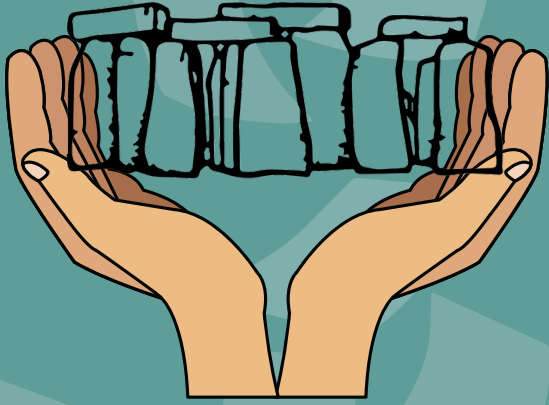
HEADTEACHER'S MESSAGE

Now that the fencing is being completed on Holder's Road field we are starting to firm up our plans for the facilities that we will now be able to provide in order to support the Physical Education of all pupils, and extend our extra-curricular provision. Within good time we will also look to exploring letting the facilities to the community as well.

We are now asking for willing volunteers from around our community to join our Friends of Stonehenge School so that we can look to fundraise for state-of-the-art equipment for the field. Please see the poster within to see the date and timings of an informal information evening.

Information regarding the partial school closure due to the strikes by the National Education Union have been sent out to all parents. Attendance in school is limited to Year 7 and 11 and vulnerable on Wednesday 1st February. Years 8, 9 and 10 will have work set on ClassCharts and will need to complete Tassomai, Bedrock, etc as per their year group.

We have been alerted about a concerning incident that occurred this week regarding a man who stopped two girls whilst they were on their way home in the Solstice Rise area. The man showed the girls inappropriate footage on his phone. This occurred at around 4:15pm on Monday afternoon. The incident has been reported to the police who will be sending additional patrols around school. We will explore topics surrounding safety and stranger awareness during our PSHE lessons and safeguarding themed assemblies.



FRIENDS OF STONEHENGE SCHOOL

F O S S

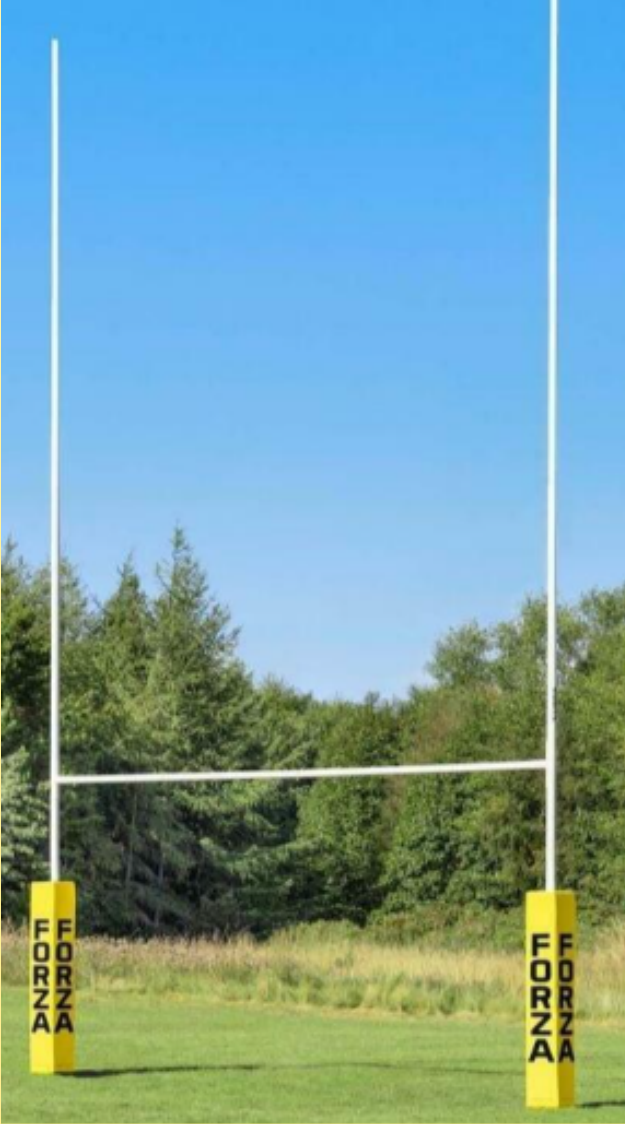
COME ALONG AND JOIN US ON MONDAY 6TH FEBRUARY AT 6.00 PM AND HELP US SET UP OUR NEW FRIENDS OF STONEHENGE SCHOOL.

OUR FIRST AIM WILL BE FUNDRAISING TO SUPPORT THE SPORTING FACILITIES FOR THE SCHOOL AND WIDER COMMUNITY.



**FIRST MEETING WILL BE MONDAY 6TH FEBRUARY AT 6.00 PM
IN THE ATRIUM**

SOME OF THE EQUIPMENT WE ARE POSSIBLY LOOKING TO PLACE ON HOLDERS FIELD FOR OUR STUDENTS



MONDAY 30TH JANUARY- PM. YEAR 11 HEALTH AND SOCIAL CARE (RE-SIT SO MAY NOT AFFECT ALL THAT STUDY THIS SUBJECT IN YEAR 11. STUDENTS HAVE BEEN INFORMED IF THIS CONCERNS THEM AND PARENTS NOTIFIED).

TUESDAY 31ST JANUARY- P1-4: YEAR 10 MATHS EXAM.



THIS WEEK'S REVISION TIP:

Cornell Notes when using GCSE Pod: The purpose of this activity is to encourage students to be accessing the vast array of information available to them on GCSE Pod whilst also retaining the information. Cornell notes help them to organise the information from the Pods and then summarise them at the end to show understanding. This video will guide you through how your child should set up their Cornell template and explain what each section of the Cornell template is for. It is best to encourage your child to watch Pods twice. Once to take in the information and the second time to capture the notes.



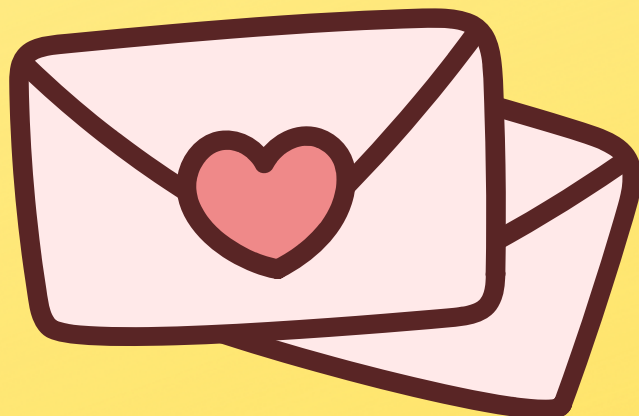
Another student enterprise activity to raise funds for our charity 'The Dogs Trust'.

On Friday 10th February the student parliament cabinet team will be delivering cards and letters to students who would like to send or receive something for valentine's day.

Posters advertising the event will be posted around school as a reminder next week.

Students can now order roses and valentine's day cards for £1 each

Get ordering and make someone happy on the last day of term



IF YOU ARE A YOUNGSTER IN A MILITARY FAMILY, THEN THE ANNINGTON CHALLENGE IS FOR YOU.

Further details about the amazing opportunity which is open to 10-19 year olds from families of **all military** ranks.

Further details on how to apply can be found via the link below. Applications close on 31st January 2023 so don't miss out on this amazing opportunity.

<https://www.outwardbound.org.uk/the-annington-challenge>



THE DOG HOUSE IS BACK!

Could you offer a rescue dog a loving home?

Applications now open

www.channel4.com/4viewers/takepart/the-dog-house

the Dog House

Could you adopt a dog like me?

APPLY NOW

www.channel4.com/4viewers/takepart/the-dog-house