



Weekly Newsletter

Issue No. 13 | 8th December 2022

UPCOMING DATES DECEMBER

Monday 12th
Trip to Parliament

Monday 12th
Trussell Trust Food Collection

Monday 12th
'Coping with Challenges'
Red Cross course with 75
students

Tuesday 13th
Nasal Flu Vaccination
Years 7, 8 & 9

Mon 12th - Fri 16th
Festive Food Week

Thursday 15th
Christmas Concert

NEW DATE!! - Friday 16th
Christmas Jumper Day - MUFTI

Friday 16th
End of Term - Early closure
12.30 pm, transport arranged
for 12.50 pm



Headteacher's message

Dear parents,

As we approach the end of the Autumn term we would like to thank you all for your support so far this academic year. There has been a lot to celebrate so far this academic year and it is lovely to reach the end of the year and reflect on all of the achievements that have gone on so far.

The year started with a Local Authority review of Leadership and Management and Behaviour, where they explored our new behaviour policy and fully supported our long term strategic plans and annual improvement plan. This was shortly followed up by our overwhelmingly positive Ofsted inspection, which raised many examples of good practice and celebrated the hard work of all members of our school community.

Phase 2 of our new build is progressing well. Our Twitter feed contains regular updates on how that is looking so worth following. This will add a great performing arts facility to the school to build on the performances of drama and music that will have already happened by Christmas.

We have:

- Started planning our improvements of sporting facilities
- Hosted the Local Youth Network
- Developed our interventions to support pupils who are struggling in terms of reading and are below their expected reading ages
- Continued to develop our curriculum and quality of teaching
- Expanded our extra-curricular offer
- Started the Duke of Edinburgh award
- Implemented a new behaviour and attendance policy
- Expanded our safeguarding team
- Started to collaborate widely with other schools in and beyond the area.

Next week we will finish early on Friday. School finishes at 12:30pm and buses arrive at 12:50pm.

The Stonehenge School is proud to
present

A Christmas Concert

15th December 2022

7.00Pm

**Soloists | Instrumentals | Bands |
Choir**

TICKETS -

ADULTS - £5.00

CHILDREN/OAP - £3.00

Tickets to be purchased via ParentPay
with a limited number available on the
night.

There will be refreshments available and
a raffle on the night

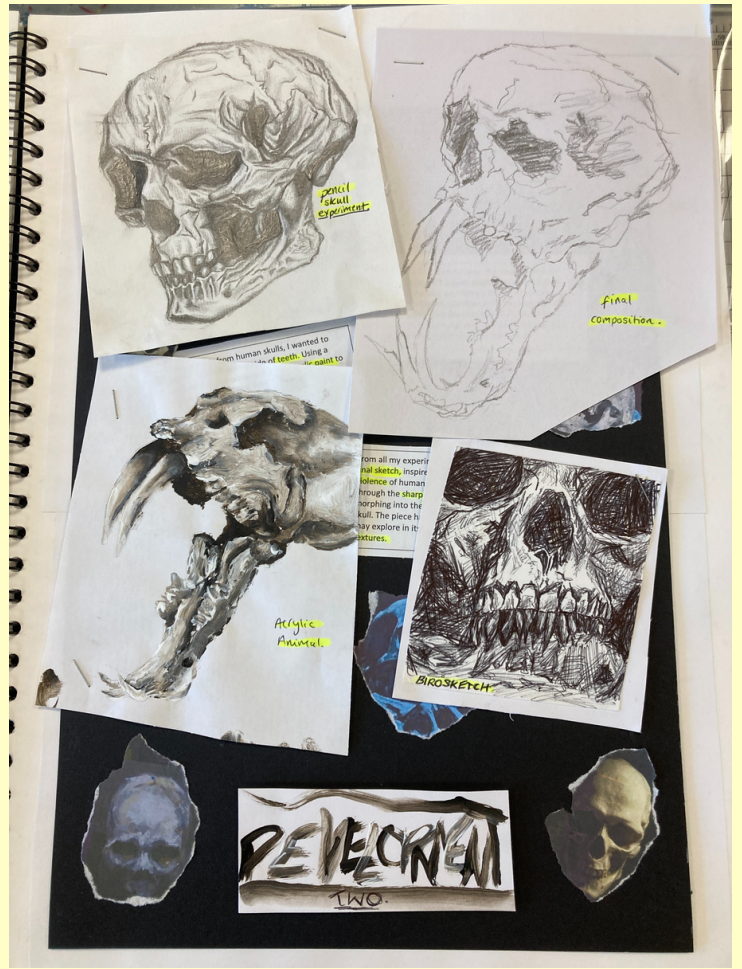
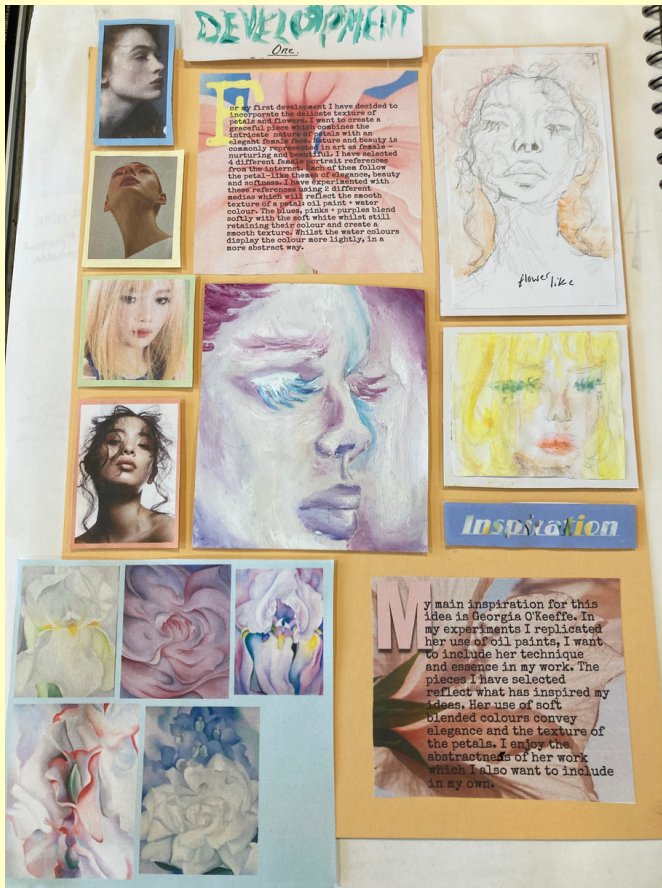
News articles

GATE CLOSURES

Please be advised that the Antrobus Road entrance gates are locked at 8.00am and the Holders Road entrance gates are locked promptly at 8.35am by our site team.

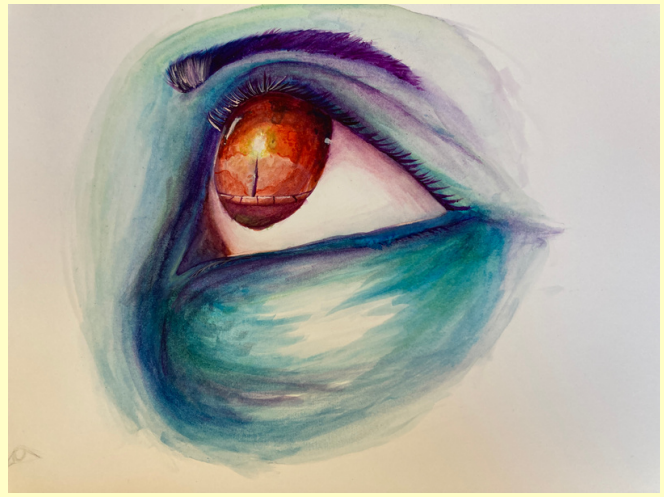
Parents are respectfully requested not to drive onto the school site. You, may use the B&M or Tesco carpark for drop off and pick up.

STONEHENGE SCHOOL LIBRARY	
Book of the week	
	<h3>Junior</h3> <h4>Fruits Basket #1</h4> <p><i>Natsuki Takaya</i></p> <p>A family with an ancient curse...</p> <p>And the girl who will change their lives forever...</p> <p>Tohru Honda was an orphan with no place to go until the mysterious Sohma family offered her a place to call home. Now her ordinary high school life is turned upside down as she's introduced to the Sohma's world of magical curses and family secrets.</p> <p>As she begins to flourish in her new home, she discovers that the Sohmas have a secret of their own - they are possessed by the spirits of the Chinese Zodiac!</p> <p>If she can keep their secret she can keep her new friends, but if she slips she could loose everything - including her memories.</p>
	<h3>Senior</h3> <h4>This Poison Heart</h4> <p><i>Kalynn Bayron</i></p>  <p>Briseis has a gift: she can grow plants from tiny seeds to rich blooms with a single touch.</p> <p>When Briseis's aunt dies and wills her a dilapidated estate in rural New York, Bri and her parents decide to leave Brooklyn behind for the summer. Hopefully there, surrounded by plants and flowers, Bri will finally learn to control her gift. But their new home is sinister in ways they could never have imagined - it comes with a specific set of instructions, an old-school apothecary, and a walled garden filled with the deadliest botanicals in the world that can only be entered by those who share Bri's unique family lineage.</p> <p>There is more to Bri's sudden inheritance than she could have imagined, and she is determined to uncover it . . . until a nefarious group comes after her in search of a rare and dangerous immortality elixir. Up against a centuries-old curse and the deadliest plant on earth, Bri must harness her gift to protect herself and her family.</p>



Year 10 Art





Year 11 Art





Year 7 Inter-tutor Group Christmas Competition

We will run a table-top display like we did for Halloween.

1. Can you make your own **Christmas tree decoration**
2. Can you write a **Christmas cracker joke?**
3. Can you make a **Christmas cake/ biscuits?**
4. JUDGING will take place on Wednesday 14th December in room 37, middle school.

Maths Homework Club

Thursdays
2:50pm - 3:30pm
Room 81

Need help with your
maths homework?
Come along!

PAWPRINT CLUB



Come and earn the **Merry Christmas 2022** certificate!

Monday 12th December, room 65, 3-3:45pm

Should I keep my child off school?



Yes

Until...

Chickenpox	at least 5 days from the onset of the rash and until all blisters have crusted over
Diarrhoea and Vomiting	48 hours after their last episode
Cold and Flu-like illness (including COVID-19)	they no longer have a high temperature and feel well enough to attend. Follow the national guidance if they've tested positive for COVID-19.
Impetigo	their sores have crusted and healed, or 48 hours after they started antibiotics
Measles	4 days after the rash first appeared
Mumps	5 days after the swelling started
Scabies	they've had their first treatment
Scarlet Fever	24 hours after they started taking antibiotics
Whooping Cough	48 hours after they started taking antibiotics

No

but make sure you let their school or nursery know about...

Hand, foot and mouth	Glandular fever
Head lice	Tonsillitis
Threadworms	Slapped cheek



SCAN ME

Advice and guidance

To find out more, search for **health protection in schools** or scan the QR code or visit <https://qrco.de/minfec>.

Amesbury Baptist Church



FOOD PANTRY

IS OPEN ON

TUESDAY AFTERNOONS

13.00-16.00HRS

AND

FRIDAY MORNINGS

10.00-13.00HRS

THE TRUSSELL TRUST FOOD COLLECTION MONDAY 12TH DECEMBER 2022



The school will be making a donation to The Trussell Trust and is asking for donations of the following items please which will be delivered to them before Christmas -

- Cereal
- Soup
- Pasta
- Rice
- Tinned tomatoes/ pasta sauce
- Lentils, beans and pulses
- Tinned meat
- Tinned vegetables
- Tea/coffee
- Tinned fruit
- Biscuits
- UHT milk
- Fruit juice

also

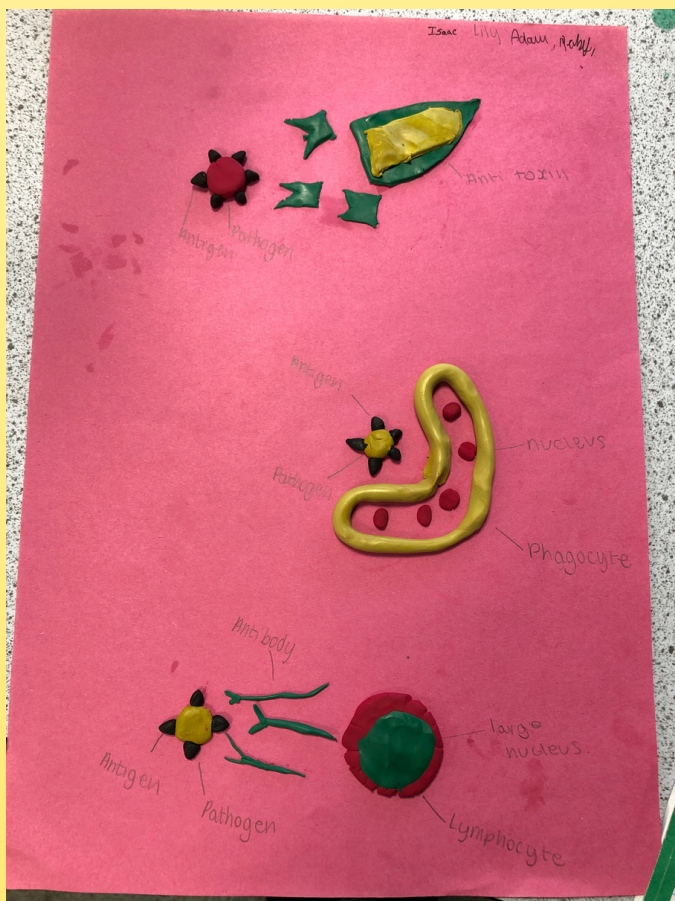


Toiletries - deodorant, toilet paper, shower gel, shaving gel, shampoo, soap, toothbrushes, tooth paste, hand wipes
Household items - laundry liquid detergent, laundry powder, washing up liquid

Feminine products - sanitary towels and tampons

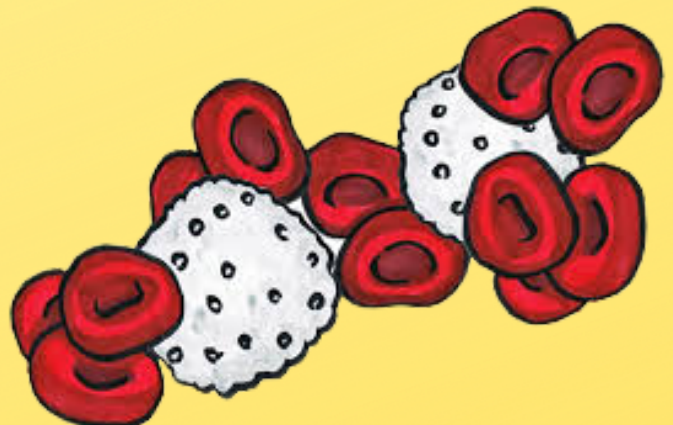
Baby supplies - nappies, baby wipes and baby food

Face masks and hand sanitiser



HOW WHITE BLOOD CELLS WORK

Part of a project the Science Club were doing.





We are Hiring!

We at Imperial Cleaning Services are looking for bank staff members who are available to join our Team as Cover Staff for Salisbury & Amesbury areas.

Hours are between 3pm & 8pm
Monday To Friday
£11 per hour

For More information please email
nick@imperialcleaningservices.co.uk
or call
07778355578