



HOLDERS ROAD
AMESBURY
SALISBURY
WILTSHIRE SP4 7PW



Maths &
Computing

THE STONEHENGE SCHOOL

Tel: 01980 623407

E-mail: admin@stonehenge.wilts.sch.uk

www.stonehenge.wilts.sch.uk

Co-Headteachers

Mr. N. D. Roper B.Sc., NPQH

Mrs C. A. Dean B.A. (Hons), NPQH

Dear Parents and Carers,

As we approach the end of the academic year I would like to thank all of you for the support that you have shown the school over the last year in order to help us create as much of a sense of normality for the pupils of The Stonehenge School as possible. We have obviously still had moments where Covid, the heat and other unpredictable events have impacted on the running of the school - in the words of John Steinbeck "the best laid plans of mice and men often gang awry"! But what keeps us going is the special sense of community that we pride ourselves on and the support we gain from all of you.

Farewell to Mr Roper

This marks the final week of Mr Roper, our long-standing Headteacher of 18 years. We are sure that you will join us all in the sentiments of wishing him all the best as he approaches retirement, and we would like to thank you for your generosity towards his leaving present. He will be leaving quite a legacy behind him: a highly successful school with a track record of Good Ofsted inspections, that is now over-subscribed in the new Year 7, and one that will continue to grow and get even better in the future. His final parting present to the school comes in the shape of another brand new building that will replace the old 1950s part of our accommodation. But it will not be 'Goodbye' as such, more a case of 'see you soon' as we are sure that there will be lots of future events (especially the opening of the new block) where he will be a special guest.

Changes to the Senior Team

Since being appointed as the new Headteacher of The Stonehenge School, I have been extending the Senior team and am therefore delighted to announce the following appointments to strengthen our existing team:

- **Mr Jamie Braddick – Deputy Headteacher in charge of Curriculum and Standards** – Mr Braddick is joining us from Bohunt Wokingham School where he is the Senior assistant headteacher. He will be responsible for continuing to raise achievement and drive standards throughout the school.
- **Mrs Fiona Staker – Deputy Headteacher in charge of Behaviour, attitudes and attendance** – Mrs Staker, promoted from Assistant Headteacher within The Stonehenge School already, will be the first person to hold this newly created post in order to uphold our high standards of behaviour and support and challenge pupils and families who need to raise their attendance rates to the expected level of 95%.
- **Mrs Hayley Blake – Assistant Headteacher in charge of Disadvantaged groups and Student Experience** – Mrs Blake was successfully promoted from a member of our Associate Senior Team and Deputy Subject Leader in English, and will be our Pupil Premium lead as well as working to enhance our rewards system and extra-curricular offer.

They are joined by the existing Assistant Headteachers:

- **Mr David Woods – Assistant Headteacher in charge of Curriculum Implementation and Staff Development** – Mr Woods ensures we are a forward thinking, research-driven school where staff are supported to improve and develop continuously.
- **Mrs Morven Fletcher – Assistant Headteacher in charge of inclusion, Safeguarding and Year 11** – Mrs Fletcher continues to be our Designated Safeguarding Lead who also has responsibility for Year 11 and oversees SEN.
- **Mrs Tracy Roberts – Assistant Headteacher in charge of Mental Health and well-being, and Transition** – Mrs Roberts now holds the title of Designated Senior Mental Health Lead

There are a number of additional new staff whom we will be welcoming in September following the continual growth of the school, who I will introduce to you all at the start of the new Academic Year.

Changes to the school day

As a further evolution of the split lunch structure that we have already implemented this year, we have found a need to make further changes so that any impact on teaching and learning is eliminated, as well as wanting to overcome punctuality problems that we encounter with many pupils.

The start and end of the school day remains the same. However, morning registration will only last five minutes. Pupils who are later than that will therefore be missing learning time so it is really important that they are here for the very start of the day.

Lunch and registration will then alternate based on year groups in order to support serving of lunch and the supervision of pupils.

TIME	7, 9, 11	8, 10
8:35-8:40	SMALL REG	SMALL REG
8:40-9:35	1	1
9:35-10:35	2	2
10:35-10:55	BREAK	
10:55-11:55	3	3
11:55-12:55	4	4
12:55 -13:25	LUNCH	REGISTRATION
13:25-13:55	REGISTRATION	LUNCH
13:55-14:50	5	5

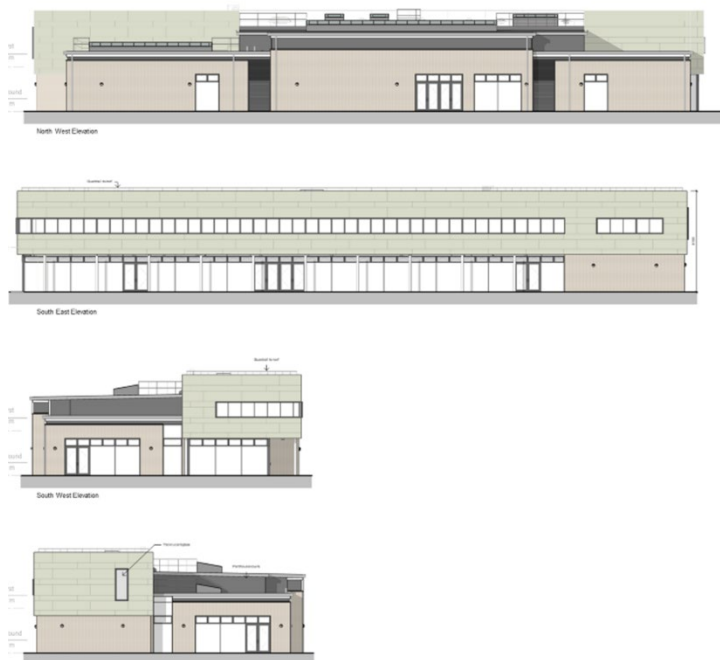
New Building

As alluded to in the section about Mr Roper, we are soon to embark on the next phase of improvements within our accommodation. Phase 2 will be underway during the next

academic year which will be a replacement for the original 1950s block that used to be our main building.

When pupils return in September of this year they will find that the site is being prepared by the contractors, and there will be numerous logistical issues that we will need to keep you updated on. In the first instance it is worth considering that dropping and picking pupils up is going to be affected, therefore use of B&M and Tescos car park is advised.

Pupils should not be in school any earlier than 7:45am and will need to be away from 'Upper school' area.



FOSS is back!

Thank you to the lovely ladies who have started to kickstart a reinvention of our Parent Teacher association called FOSS (Friends of Stonehenge School). They have already helped to volunteer at our new year 7 induction evening and we will be in contact in the new academic year about how you can help to get involved!

Uniform policy

We have been working on a redraft of our uniform policy in order to support the affordability of our uniform. With guidance from the Department of Education designed to support parents we have been able to adapt our uniform to make it even more reasonable in terms of cost. This includes limiting the number of items that are 'branded' and choosing items that can be found at a range of suppliers. The most significant saving will be in terms of the cost of PE kit where fewer branded items will be needed, though pupils can still choose to have branded shorts and skorts should they choose. We have also created a Second Hand Uniform shop where donated items can be purchased for a considerably lower price. Please see the attached updated version that also outlines our uniform expectations.

Please remember to follow our social media pages for more continuous updates to what is happening in school. We have a lot to celebrate! Thank you all once again for all you do to support your child through their education and we hope you have a lovely summer.

Best regards

Mrs C Dean

