



## Record Exam Success for pupils at The Stonehenge School



2009 was a record breaking year for pupils at The Stonehenge School with almost every record in the book being smashed.

The records started to tumble in May, when a record number of pupils achieved a level 5 or better in the Key Stage 3 examinations in all three core subjects.

<b>Level 5+</b>	<b>Maths</b>	<b>English</b>	<b>Science</b>
<b>2006</b>	77%	68%	71%
<b>2007</b>	74%	58%	76%
<b>2008</b>	69%	56%	73%
<b>2009</b>	83%	80%	85%

There was also a record number of pupils achieving a level 6 or better in all three core subjects;

<b>Level 6+</b>	<b>Maths</b>	<b>English</b>	<b>Science</b>
<b>2006</b>	48%	33%	39%
<b>2007</b>	49%	16%	44%
<b>2008</b>	48%	19%	36%
<b>2009</b>	59%	40%	52%

We were also exceptionally pleased with our Gifted & Talented Mathematicians who achieved a record number of 12 Level 8s in Mathematics. This was the icing on the cake to an excellent first year as a Specialist Mathematics & Computing college.

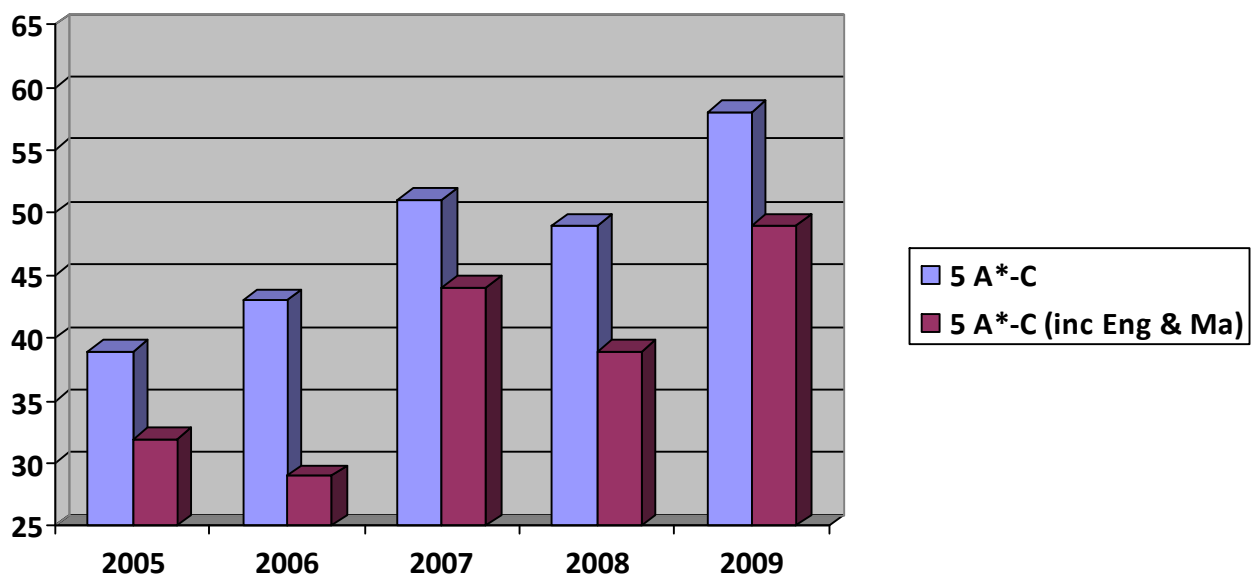


### GCSE Results

The records continued to fall in the summer when our Year 11 pupils achieved record GCSE results. 58% of students achieved 5 or more A\*-C grades, with 49% of all Year 11 students achieving the Government's key measure of 5 A\*-C grades (including English & Maths), giving many students much better life chances.

These results were well above the challenging Fisher Family Trust D targets that the school were set by Wiltshire County council. This means that we are in the top 25% of schools nationally, with pupils of similar ability.

	<b>% of 5 A*-C</b>	<b>3 year average</b>	<b>% of 5 A*-C (inc Eng &amp; Ma)</b>	<b>3 year average</b>
<b>2005</b>	39		32	
<b>2006</b>	43	<b>47</b>	29	<b>36</b>
<b>2007</b>	51	<b>44</b>	44	<b>35</b>
<b>2008</b>	49	<b>48</b>	39	<b>37</b>
<b>2009</b>	58	<b>53</b>	49	<b>44</b>



We are rightly proud of all of these successes, which are testament to the hard work of the pupils and their parents as well as to the dedication and professionalism that was shown by our staff.

